

TOP2A (Phospho-Ser1337) Antibody

Catalog No: #12785



Package Size: #12785-1 50ul #12785-2 100ul

Orders: order@signalwayantibody.com

Support: tech@signalwayantibody.com

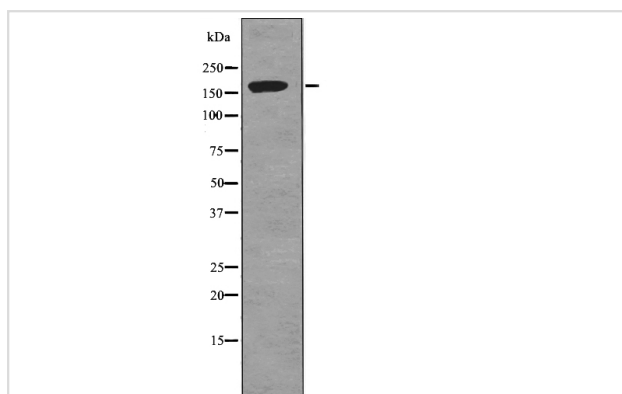
Description

Product Name	TOP2A (Phospho-Ser1337) Antibody
Host Species	Rabbit
Clonality	Polyclonal
Purification	Antibodies were produced by immunizing rabbits with synthetic phosphopeptide and KLH conjugates. Antibodies were purified by affinity-chromatography using epitope-specific phosphopeptide. Non-phospho specific antibodies were removed by chromatography using non-phosphopeptide.
Applications	WB
Species Reactivity	Hu
Specificity	TOP2A (Phospho-Ser1337) Antibody detects endogenous levels of TOP2A only when phosphorylated at Ser1337
Immunogen Type	Peptide
Immunogen Description	A synthesized peptide derived from human TOP2A (Phospho-Ser1337)
Target Name	TOP2A
Modification	Phospho
Other Names	TOP2A, DNA topoisomerase II, 170 kD, TOP2, DNA gyrase, DNA topoisomerase 2-alpha, TP2A
Accession No.	Swiss-Prot#: P11388NCBI Gene ID: 7153
Target Species	human
Calculated MW	174kd
Concentration	1.0mg/ml
Formulation	Rabbit IgG in phosphate buffered saline (without Mg ²⁺ and Ca ²⁺), pH 7.4, 150mM NaCl, 0.02% sodium azide and 50% glycerol.
Storage	Store at -20°C

Application Details

Western blotting: 1:1000

Images



Western blot analysis TOP2A (Phospho-Ser1337) using 293 whole cell lysates

Note: This product is for in vitro research use only and is not intended for use in humans or animals.