

NSDHL Polyclonal Antibody

Catalog No: #29956



Package Size: #29956-1 50ul #29956-2 100ul

Orders: order@signalwayantibody.comSupport: tech@signalwayantibody.com

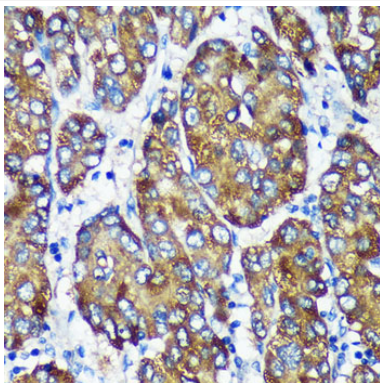
Description

| | |
|-----------------------|--|
| Product Name | NSDHL Polyclonal Antibody |
| Host Species | Rabbit |
| Clonality | Polyclonal |
| Isotype | IgG |
| Purification | Affinity purification |
| Applications | WB,IHC,IF |
| Species Reactivity | Human,Mouse,Rat |
| Immunogen Description | Recombinant fusion protein of human NSDHL (NP_057006.1). |
| Other Names | NSDHL;H105E3;SDR31E1;XAP104 |
| Accession No. | Uniprot:Q15738GeneID:50814 |
| Calculated MW | Refer to figures |
| SDS-PAGE MW | Refer to figures |
| Formulation | PBS with 0.02% sodium azide,50% glycerol,pH7.3. |
| Storage | Store at -20°C. Avoid freeze / thaw cycles. |

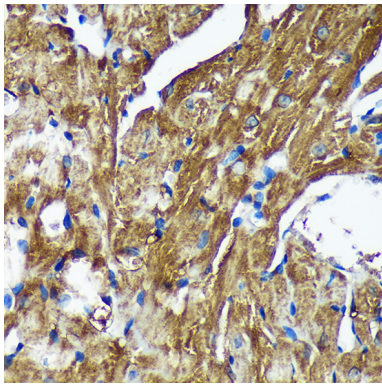
Application Details

WB □ 1:500 - 1:2000 IHC □ 1:50 - 1:200 IF □ 1:50 - 1:200

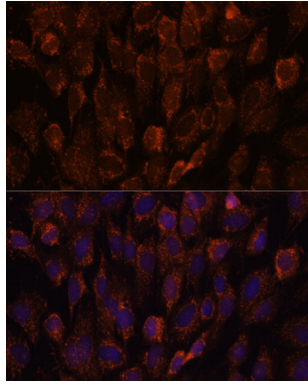
Images



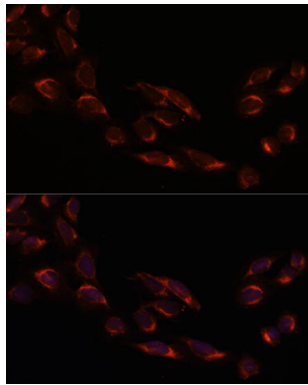
Immunohistochemistry of paraffin-embedded Human liver cancer using [KO Validated] NSDHL Rabbit pAb.



Immunohistochemistry of paraffin-embedded Mouse heart using [KO Validated] NSDHL Rabbit pAb.



Immunofluorescence analysis of C6 cells using NSDHL antibody.



Immunofluorescence analysis of U-2 OS cells using NSDHL antibody.

Background

The protein encoded by this gene is localized in the endoplasmic reticulum and is involved in cholesterol biosynthesis. Mutations in this gene are associated with CHILD syndrome, which is a X-linked dominant disorder of lipid metabolism with disturbed cholesterol biosynthesis, and typically lethal in males. Alternatively spliced transcript variants with differing 5' UTR have been found for this gene.

Note: This product is for in vitro research use only and is not intended for use in humans or animals.