

NBR1 Polyclonal Antibody

Catalog No: #30504



Package Size: #30504-1 50ul #30504-2 100ul

Orders: order@signalwayantibody.comSupport: tech@signalwayantibody.com

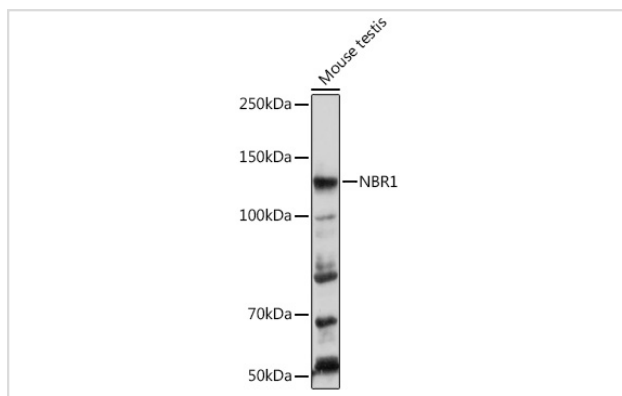
Description

Product Name	NBR1 Polyclonal Antibody
Host Species	Rabbit
Clonality	Polyclonal
Isotype	IgG
Purification	Affinity purification
Applications	WB,IHC,IF
Species Reactivity	Human,Mouse,Rat
Immunogen Description	Recombinant protein of human NBR1
Other Names	NBR1;1A1-3B;IAI3B;M17S2;MIG19
Accession No.	Uniprot:Q14596GeneID:4077
Calculated MW	107kDa/140kDa
SDS-PAGE MW	120KDa
Formulation	PBS with 0.02% sodium azide,50% glycerol,pH7.3.
Storage	Store at -20°C. Avoid freeze / thaw cycles.

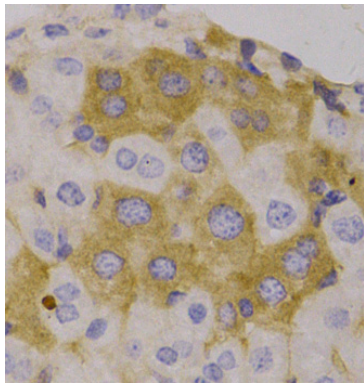
Application Details

WB □ 1:500 - 1:2000 IHC □ 1:50 - 1:200 IF □ 1:50 - 1:100

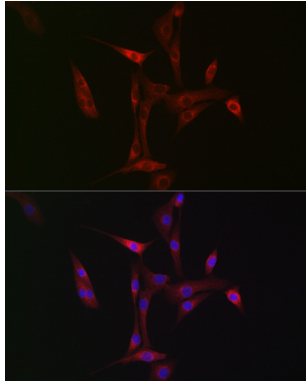
Images



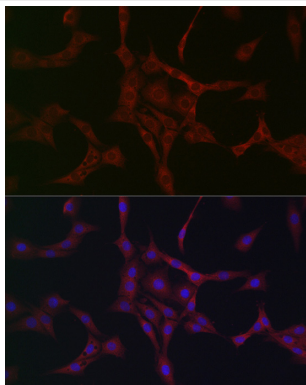
Western blot analysis of extracts of Mouse testis, using NBR1 Rabbit pAb.



Immunohistochemistry of paraffin-embedded human liver, using NBR1 antibody.



Immunofluorescence analysis of NIH/3T3 cells using NBR1 Rabbit pAb.



Immunofluorescence analysis of PC-12 cells using NBR1 Rabbit pAb.

Background

The protein encoded by this gene was originally identified as an ovarian tumor antigen monitored in ovarian cancer. The encoded protein contains a B-box/coiled-coil motif, which is present in many genes with transformation potential. It functions as a specific autophagy receptor for the selective autophagic degradation of peroxisomes by forming intracellular inclusions with ubiquitylated autophagic substrates. This gene is located on a region of chromosome 17q21.1 that is in close proximity to the BRCA1 tumor suppressor gene. Alternative splicing of this gene results in multiple transcript variants.

Note: This product is for in vitro research use only and is not intended for use in humans or animals.