

# LC3B Polyclonal Antibody

Catalog No: #30848



Package Size: #30848-1 50ul #30848-2 100ul

Orders: [order@signalwayantibody.com](mailto:order@signalwayantibody.com)

Support: [tech@signalwayantibody.com](mailto:tech@signalwayantibody.com)

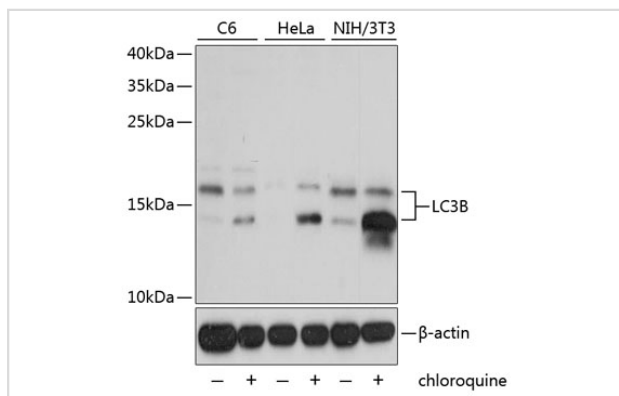
## Description

Product Name	LC3B Polyclonal Antibody
Host Species	Rabbit
Clonality	Polyclonal
Isotype	IgG
Purification	Affinity purification
Applications	WB,IHC,IF
Species Reactivity	Human,Mouse,Rat
Immunogen Description	A synthetic peptide of human LC3B
Other Names	MAP1LC3B; ATG8F; LC3B; MAP1A/1BLC3; MAP1LC3B-a; microtubule associated protein 1 light chain 3 beta
Accession No.	Swiss-Prot#:Q9GZQ8NCBI Gene ID:81631
Calculated MW	14kDa, 16kDa
Formulation	Avoid freeze / thaw cycles.   Buffer: PBS with 50% glycerol, pH7.4.
Storage	Store at -20°C

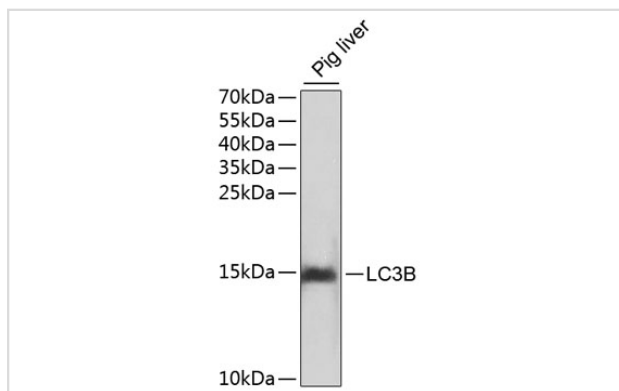
## Application Details

WB □ 1:500 - 1:2000 IHC □ 1:50 - 1:200 IF □ 1:50 - 1:200

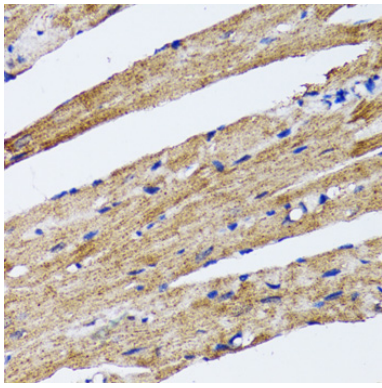
## Images



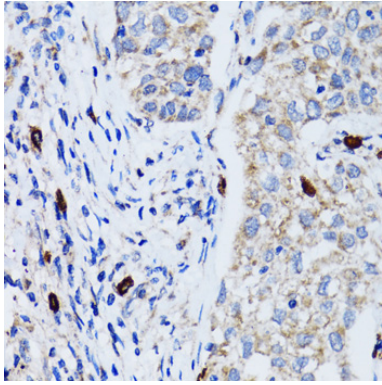
Western blot analysis of extracts of various cell lines, using LC3B antibody at 1:1000 dilution. C6 cells were treated by Chloroquine (50  $\mu\text{M}$ ) for 20 hours. HeLa cells were treated by Chloroquine (50  $\mu\text{M}$ ) for 20 hours. NIH/3T3 cells were treated by Chloroquine (50  $\mu\text{M}$ ) for 20 hours.



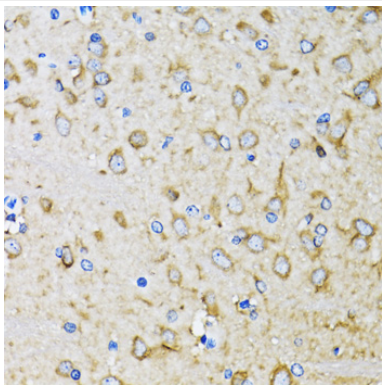
Western blot analysis of extracts of pig liver, using LC3B antibody.



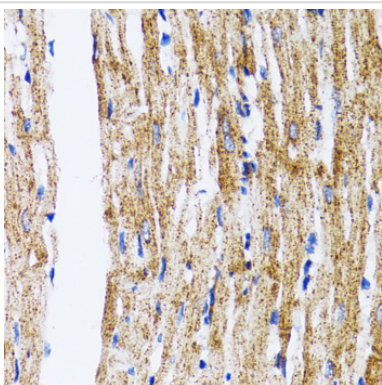
Immunohistochemistry of paraffin-embedded rat heart using LC3B antibody at dilution of 1:100 (40x lens).



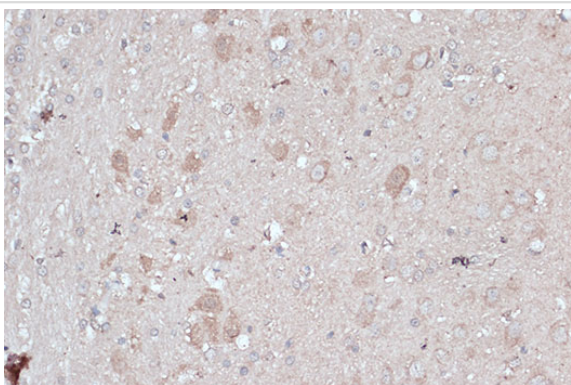
Immunohistochemistry of paraffin-embedded human lung cancer using LC3B antibody at dilution of 1:100 (40x lens).



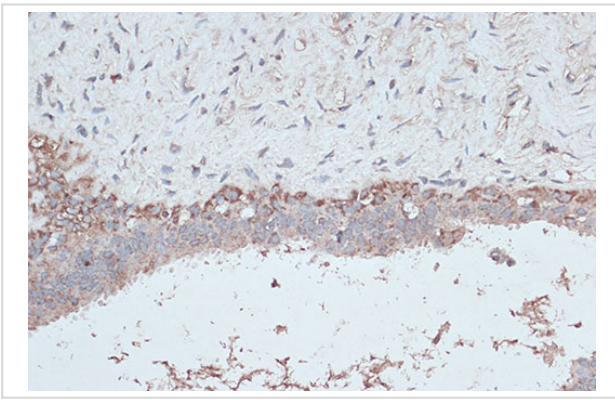
Immunohistochemistry of paraffin-embedded mouse brain using LC3B antibody at dilution of 1:100 (40x lens).



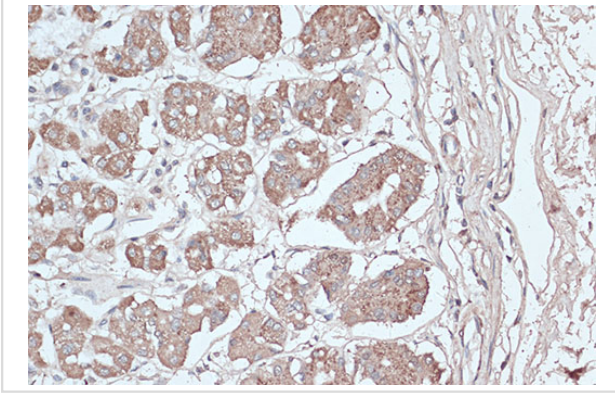
Immunohistochemistry of paraffin-embedded mouse heart using LC3B antibody at dilution of 1:100 (40x lens).



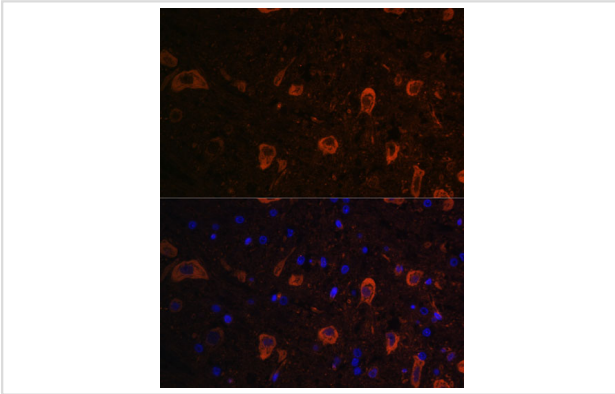
Immunohistochemistry of paraffin-embedded rat brain using LC3B antibody at dilution of 1:100 (40x lens).



Immunohistochemistry of paraffin-embedded human breast cancer using LC3B antibody at dilution of 1:100 (40x lens).



Immunohistochemistry of paraffin-embedded human stomach using LC3B antibody at dilution of 1:100 (40x lens).



Immunofluorescence analysis of rat brain using LC3B antibody at dilution of 1:100. Blue: DAPI for nuclear staining.

## Background

The product of this gene is a subunit of neuronal microtubule-associated MAP1A and MAP1B proteins, which are involved in microtubule assembly and important for neurogenesis. Studies on the rat homolog implicate a role for this gene in autophagy, a process that involves the bulk degradation of cytoplasmic component.

Note: This product is for in vitro research use only and is not intended for use in humans or animals.