

# c-SRC/FYN/c-YES (phospho-Tyr419/420/426) Antibody

Catalog No: #13302

Orders: [order@signalwayantibody.com](mailto:order@signalwayantibody.com)Support: [tech@signalwayantibody.com](mailto:tech@signalwayantibody.com)

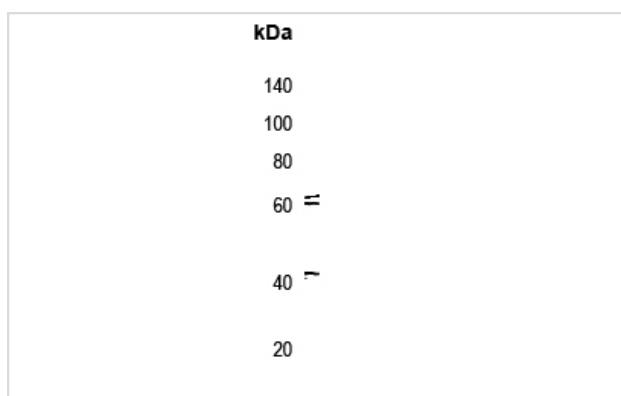
## Description

Product Name	c-SRC/FYN/c-YES (phospho-Tyr419/420/426) Antibody
Host Species	Rabbit
Clonality	Polyclonal
Purification	The antibody was purified by immunogen affinity chromatography.
Applications	WB IHC
Species Reactivity	Hu,Ms,Rt
Specificity	Recognizes endogenous levels of c-SRC/FYN/c-YES (phospho-Tyr419/420/426) protein.
Immunogen Description	KLH-conjugated synthetic peptide encompassing a sequence within the C-term region of human SRC.
Target Name	SRC; FYN; YES1
Other Names	SRC1; Proto-oncogene tyrosine-protein kinase Src; Proto-oncogene c-Src; pp60c-src; p60-Src; Tyrosine-protein kinase Fyn; Proto-oncogene Syn; Proto-oncogene c-Fyn; Src-like kinase; SLK; p59-Fyn; YES; Tyrosine-protein kinase Yes; Proto-oncogene c-Yes; p61-Yes
Accession No.	Swiss-Prot#:P12931; P06241; P07947NCBI Gene ID:6714; 2534; 7525
Calculated MW	60KD
Concentration	1 mg/ml
Formulation	Rabbit IgG in phosphate buffered saline (without Mg <sup>2+</sup> and Ca <sup>2+</sup> ), pH 7.4, 150mM NaCl, 0.02% sodium azide and 50% glycerol.
Storage	Store at -20°C

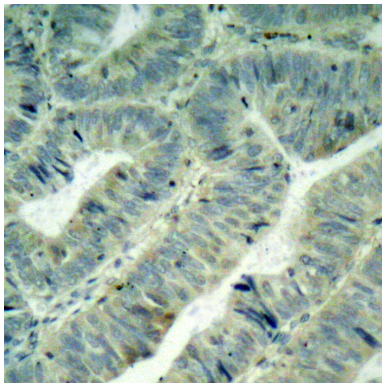
## Application Details

Western blotting:1:500 - 1:1000Immunohistochemistry:1:50 - 1:100

## Images



Western blot analysis of c-SRC/FYN/c-YES (phospho-Tyr419/420/426) expression in COLO205 serum treated whole cell lysates.



Immunohistochemical analysis of c-SRC/FYN/c-YES (phospho-Tyr419/420/426) staining in human colon carcinoma formalin fixed paraffin embedded tissue section. The section was then incubated with the antibody at room temperature and detected using an HRP conjugated compact polymer system. DAB was used as the chromogen. The section was then counterstained with haematoxylin and mounted with DPX.

---

Note: This product is for in vitro research use only and is not intended for use in humans or animals.