

PE2 (phospho-Thr526) Antibody

Catalog No: #13307

Orders: order@signalwayantibody.comSupport: tech@signalwayantibody.com

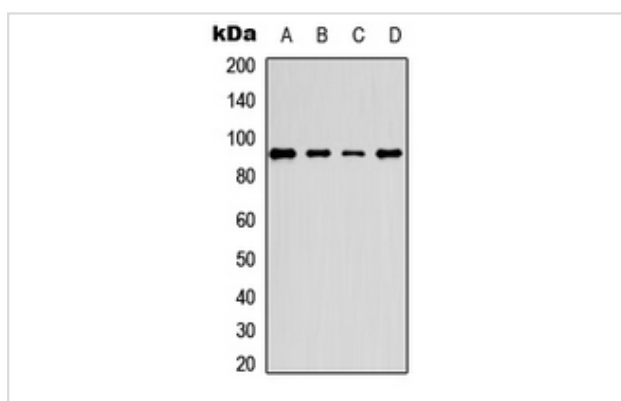
Description

Product Name	PE2 (phospho-Thr526) Antibody
Host Species	Rabbit
Clonality	Polyclonal
Purification	The antibody was purified by immunogen affinity chromatography.
Applications	WB IHC IF
Species Reactivity	Hu,Ms,Rt
Specificity	Recognizes endogenous levels of PE2 (phospho-Thr526) protein.
Immunogen Description	KLH-conjugated synthetic peptide encompassing a sequence within the C-term region of human PE2.
Target Name	ERF
Other Names	ETS domain-containing transcription factor ERF; Ets2 repressor factor; PE-2
Accession No.	Swiss-Prot#:P50548NCBI Gene ID:2077
Calculated MW	90KD
Concentration	1 mg/ml
Formulation	Rabbit IgG in phosphate buffered saline (without Mg ²⁺ and Ca ²⁺), pH 7.4, 150mM NaCl, 0.02% sodium azide and 50% glycerol.
Storage	Store at -20°C

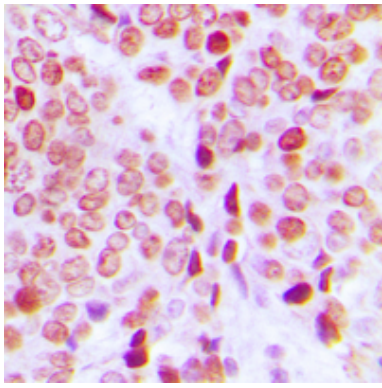
Application Details

Western blotting:1:500 - 1:1000Immunohistochemistry:1:50 - 1:100Immunofluorescence:1:100 - 1:300

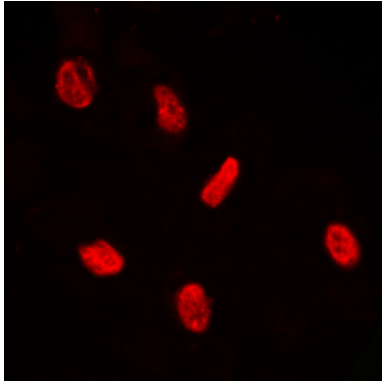
Images



Western blot analysis of PE2 (phospho-Thr526) expression in HEK293, MCF7, mouse lung, rat lung whole cell lysates.



Immunohistochemical analysis of PE2 (phospho-Thr526) staining in human ovarian cancer formalin fixed paraffin embedded tissue section. The section was then incubated with the antibody at room temperature and detected using an HRP conjugated compact polymer system. DAB was used as the chromogen. The section was then counterstained with haematoxylin and mounted with DPX.



Immunofluorescent analysis of PE2 (phospho-Thr526) staining in HeLa cells. Formalin-fixed cells were permeabilized with 0.1% Triton X-100 in TBS for 5-10 minutes and blocked with 3% BSA-PBS for 30 minutes at room temperature. Cells were probed with the primary antibody in 3% BSA-PBS and incubated overnight at 4 C in a humidified chamber. Cells were washed with PBST and incubated with a DyLight 594-conjugated secondary antibody (red) in PBS at room temperature in the dark.

Note: This product is for in vitro research use only and is not intended for use in humans or animals.