

# TAL1/2 (acetyl-Lys221+222/Lys36+37) Antibody

Catalog No: #HW211

Orders: [order@signalwayantibody.com](mailto:order@signalwayantibody.com)Support: [tech@signalwayantibody.com](mailto:tech@signalwayantibody.com)

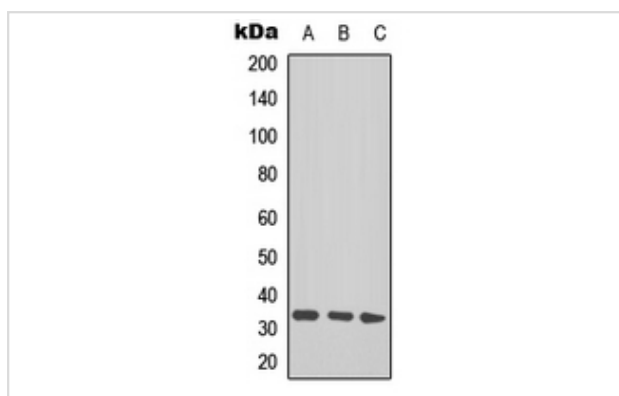
## Description

Product Name	TAL1/2 (acetyl-Lys221+222/Lys36+37) Antibody
Host Species	Rabbit
Clonality	Polyclonal
Purification	The antibody was purified by immunogen affinity chromatography.
Applications	WB
Species Reactivity	Hu,Ms
Specificity	Recognizes endogenous levels of TAL1/2 (AcLys221+222/Lys36+37) protein.
Immunogen Description	KLH-conjugated synthetic peptide encompassing a sequence within the center region of human TAL1/2.
Target Name	TAL1; TAL2
Other Names	TAL1; BHLHA17; SCL; TCL5; T-cell acute lymphocytic leukemia protein 1; TAL-1; Class A basic helix-loop-helix protein 17; bHLHa17; Stem cell protein; T-cell leukemia/lymphoma protein 5; TAL2; BHLHA19; T-cell acute lymphocytic leukemia protein 2; TAL-2; Class A basic helix-loop-helix protein 19; bHLHa19
Accession No.	Swiss-Prot#:P17542; Q16559NCBI Gene ID:6886; 6887
Calculated MW	34KD
Concentration	1 mg/ml
Formulation	Rabbit IgG in phosphate buffered saline (without Mg <sup>2+</sup> and Ca <sup>2+</sup> ), pH 7.4, 150mM NaCl, 0.02% sodium azide and 50% glycerol.
Storage	Store at -20°C

## Application Details

Western blotting: 1:500 - 1:1000

## Images



Western blot analysis of GPR103 expression in U87MG, HEK293T whole cell lysates.

Note: This product is for in vitro research use only and is not intended for use in humans or animals.