

Myosin-pan (acetyl-Lys505) Antibody

Catalog No: #HW213

Orders: order@signalwayantibody.comSupport: tech@signalwayantibody.com

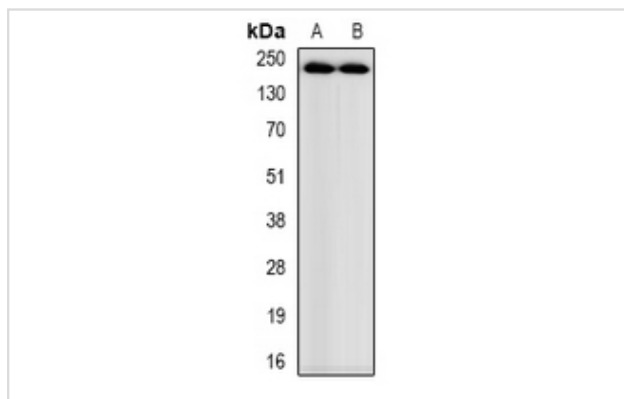
Description

Product Name	Myosin-pan (acetyl-Lys505) Antibody
Host Species	Rabbit
Clonality	Polyclonal
Purification	The antibody was purified by immunogen affinity chromatography.
Applications	WB
Species Reactivity	Hu,Ms,Rt
Specificity	Recognizes endogenous levels of Myosin-pan (AcLys505) protein.
Immunogen Description	KLH-conjugated synthetic peptide encompassing a sequence within the center region of human Myosin.
Target Name	MYH1; MYH2; MYH3; PTPRJ; MYH6; MYH7; MYH8
Other Names	MYH1; Myosin-1; Myosin heavy chain 1; Myosin heavy chain 2x; MyHC-2x; Myosin heavy chain IIx/d; MyHC-IIx/d; Myosin heavy chain, skeletal muscle, adult 1; MYH2; MYHSA2; Myosin-2; Myosin heavy chain 2; Myosin heavy chain 2a; MyHC-2a; Myosin heavy chain IIa; MyHC-IIa; Myosin heavy chain, skeletal muscle, adult 2; MYH3; Myosin-3; Muscle embryonic myosin heavy chain; Myosin heavy chain 3; Myosin heavy chain, fast skeletal muscle, embryonic; SMHCE; MYH4; Myosin-4; Myosin heavy chain 2b; MyHC-2b; Myosin heavy chain 4; Myosin heavy chain IIb; MyHC-IIb; Myosin heavy chain, skeletal muscle, fetal; MYH6; MYHCA; Myosin-6; Myosin heavy chain 6; Myosin heavy chain, cardiac muscle alpha isoform; MyHC-alpha; MYH7; MYHCB; Myosin-7; Myosin heavy chain 7; Myosin heavy chain slow isoform; MyHC-slow; Myosin heavy chain, cardiac muscle beta isoform; MyHC-beta; MYH8; Myosin-8; Myosin heavy chain 8; Myosin heavy chain, skeletal muscle, perinatal; MyHC-perinatal
Accession No.	Swiss-Prot#:P12882; Q9UKX2; P11055; Q9Y623; P13533; P12883; P13535NCBI Gene ID:4619; 4620; 4621; 5795; 4624; 4625; 4626
Calculated MW	223KD
Concentration	1 mg/ml
Formulation	Rabbit IgG in phosphate buffered saline (without Mg ²⁺ and Ca ²⁺), pH 7.4, 150mM NaCl, 0.02% sodium azide and 50% glycerol.
Storage	Store at -20°C

Application Details

Western blotting:1:500 - 1:1000

Images



Western blot analysis of GPRC6A expression in HEK293T, LO2, rat testis whole cell lysates.

Note: This product is for in vitro research use only and is not intended for use in humans or animals.