

Cytochrome P450 7B1 Antibody

Catalog No: #47819

Package Size: #47819-1 50ul #47819-2 100ul

Orders: order@signalwayantibody.comSupport: tech@signalwayantibody.com

Description

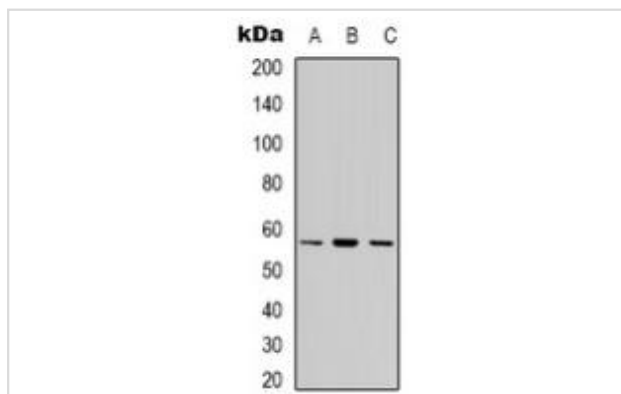
Product Name	Cytochrome P450 7B1 Antibody
Host Species	Rabbit
Clonality	Polyclonal
Purification	The antibody was purified by immunogen affinity chromatography.
Applications	WB, IHC
Species Reactivity	Hu
Specificity	Recognizes endogenous levels of Cytochrome P450 7B1 protein.
Immunogen Description	KLH-conjugated synthetic peptide encompassing a sequence within the center region of human Cytochrome P450 7B1.
Target Name	CYP7B1
Other Names	25-hydroxycholesterol 7-alpha-hydroxylase; Cytochrome P450 7B1; Oxysterol 7-alpha-hydroxylase
Accession No.	Swiss-Prot#:O75881NCBI Gene ID:9420
Calculated MW	58KD
Concentration	1 mg/ml
Formulation	Liquid in 0.42% Potassium phosphate, 0.87% Sodium chloride, pH 7.3, 30% glycerol, and 0.01% sodium azide.
Storage	Shipped at 4°C. Upon delivery aliquot and store at -20°C for one year. Avoid freeze/thaw cycles.

Application Details

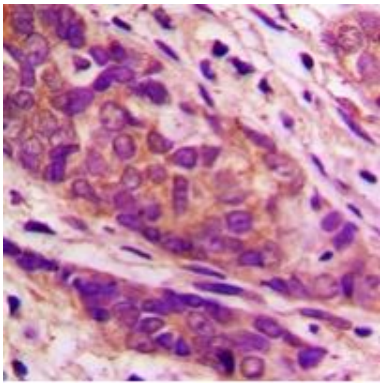
Western blotting:1:500 - 1:1000

Immunohistochemistry:1:50 - 1:100

Images



Western blot analysis of Cytochrome P450 7B1 expression in HeLa (A), A549 (B), MCF7 (C) whole cell lysates.



Immunohistochemical analysis of Cytochrome P450 7B1 staining in human prostate cancer formalin fixed paraffin embedded tissue section. The section was pre-treated using heat mediated antigen retrieval with sodium citrate buffer (pH 6.0). The section was then incubated with the antibody at room temperature and detected using an HRP conjugated compact polymer system. DAB was used as the chromogen. The section was then counterstained with haematoxylin and mounted with DPX.

Note: This product is for in vitro research use only and is not intended for use in humans or animals.