

GPR37L1 Antibody

Catalog No: #47827



Package Size: #47827-1 50ul #47827-2 100ul

Orders: order@signalwayantibody.com

Support: tech@signalwayantibody.com

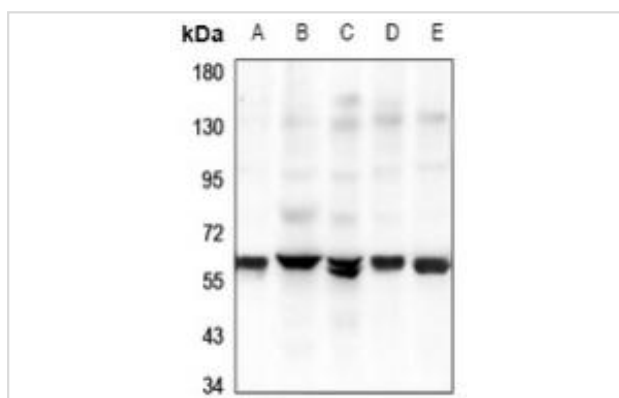
Description

Product Name	GPR37L1 Antibody
Host Species	Rabbit
Clonality	Polyclonal
Purification	The antibody was purified by immunogen affinity chromatography.
Applications	WB, IF/ICC
Species Reactivity	Hu
Specificity	Recognizes endogenous levels of GPR37L1 protein.
Immunogen Description	KLH-conjugated synthetic peptide encompassing a sequence within the N-term region of human GPR37L1.
Target Name	GPR37L1
Other Names	ETBRLP2; Prosaposin receptor GPR37L1; Endothelin B receptor-like protein 2; ETBR-LP-2; G-protein coupled receptor 37-like 1
Accession No.	Swiss-Prot#:O60883NCBI Gene ID:9283
Calculated MW	53KD
Concentration	1 mg/ml
Formulation	Liquid in 0.42% Potassium phosphate, 0.87% Sodium chloride, pH 7.3, 30% glycerol, and 0.01% sodium azide.
Storage	Shipped at 4°C. Upon delivery aliquot and store at -20°C for one year. Avoid freeze/thaw cycles.

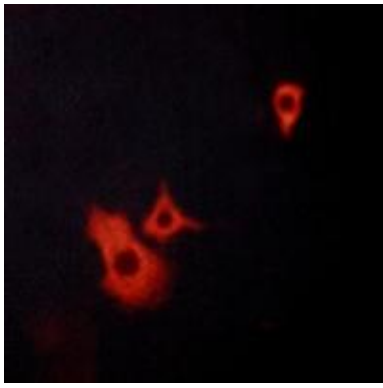
Application Details

Western blotting:1:500 - 1:1000

Images



Western blot analysis of GPR37L1 expression in SKOV3 (A), HEK293T (B), A549 (C), LO2 (D), EC9706 (E) whole cell lysates



Immunofluorescent analysis of GPR37L1 staining in LOVO cells. Formalin-fixed cells were permeabilized with 0.1% Triton X-100 in TBS for 5-10 minutes and blocked with 3% BSA-PBS for 30 minutes at room temperature. Cells were probed with the primary antibody in 3% BSA-PBS and incubated overnight at 4 °C in a humidified chamber. Cells were washed with PBST and incubated with a AF594-conjugated secondary antibody (red) in PBS at room temperature in the dark.

Note: This product is for in vitro research use only and is not intended for use in humans or animals.