

GRTP1 Antibody

Catalog No: #47828



Package Size: #47828-1 50ul #47828-2 100ul

Orders: order@signalwayantibody.com

Support: tech@signalwayantibody.com

Description

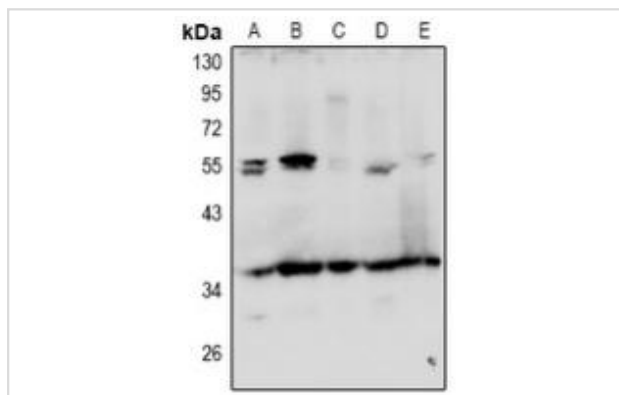
Product Name	GRTP1 Antibody
Host Species	Rabbit
Clonality	Polyclonal
Purification	The antibody was purified by immunogen affinity chromatography.
Applications	WB, IHC
Species Reactivity	Hu,Ms,Rt
Specificity	Recognizes endogenous levels of GRTP1 protein.
Immunogen Description	KLH-conjugated synthetic peptide encompassing a sequence within the center region of human GRTP1.
Target Name	GRTP1
Other Names	TBC1D6; Growth hormone-regulated TBC protein 1; TBC1 domain family member 6
Accession No.	Swiss-Prot#:Q5TC63NCBI Gene ID:79774
Calculated MW	38KD
Concentration	1 mg/ml
Formulation	Liquid in 0.42% Potassium phosphate, 0.87% Sodium chloride, pH 7.3, 30% glycerol, and 0.01% sodium azide.
Storage	Shipped at 4°C. Upon delivery aliquot and store at -20°C for one year. Avoid freeze/thaw cycles.

Application Details

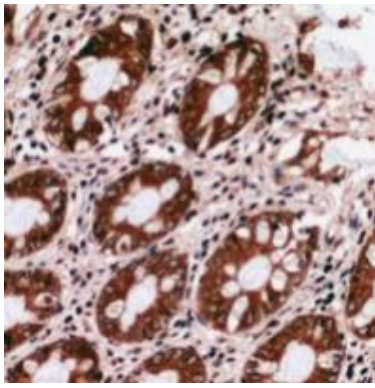
Western blotting:1:500 - 1:1000

Immunohistochemistry:1:50 - 1:100

Images



Western blot analysis of GRTP1 expression in A549 (A), Jurkat (B), THP1 (C), PC12 (D), Raw264.7 (E) whole cell lysates.



Immunohistochemical analysis of GRTP1 staining in human colon cancer formalin fixed paraffin embedded tissue section. The section was pre-treated using heat mediated antigen retrieval with sodium citrate buffer (pH 6.0). The section was then incubated with the antibody at room temperature and detected using an HRP conjugated compact polymer system. DAB was used as the chromogen. The section was then counterstained with haematoxylin and mounted with DPX.

Note: This product is for in vitro research use only and is not intended for use in humans or animals.