

## KDEL3 Antibody

Catalog No: #47829

Package Size: #47829-1 50ul #47829-2 100ul

Orders: [order@signalwayantibody.com](mailto:order@signalwayantibody.com)Support: [tech@signalwayantibody.com](mailto:tech@signalwayantibody.com)

## Description

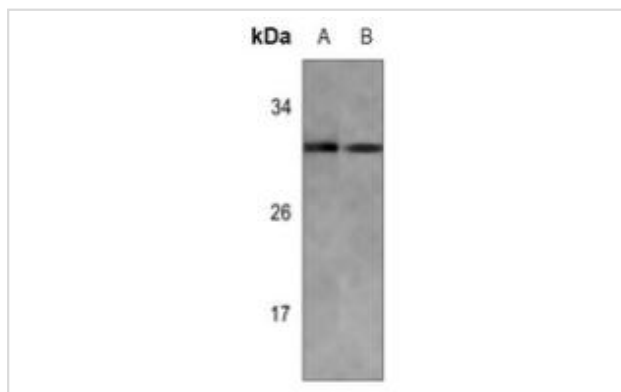
Product Name	KDEL3 Antibody
Host Species	Rabbit
Clonality	Polyclonal
Purification	The antibody was purified by immunogen affinity chromatography.
Applications	WB, IHC
Species Reactivity	Hu,Ms,Rt
Specificity	Recognizes endogenous levels of KDEL3 protein.
Immunogen Description	KLH-conjugated synthetic peptide encompassing a sequence within the center region of human KDEL3.
Target Name	KDEL3
Other Names	ER lumen protein retaining receptor 3; KDEL endoplasmic reticulum protein retention receptor 3; KDEL receptor 3
Accession No.	Swiss-Prot#:O43731NCBI Gene ID:11015
Calculated MW	25KD
Concentration	1 mg/ml
Formulation	Liquid in 0.42% Potassium phosphate, 0.87% Sodium chloride, pH 7.3, 30% glycerol, and 0.01% sodium azide.
Storage	Shipped at 4°C. Upon delivery aliquot and store at -20°C for one year. Avoid freeze/thaw cycles.

## Application Details

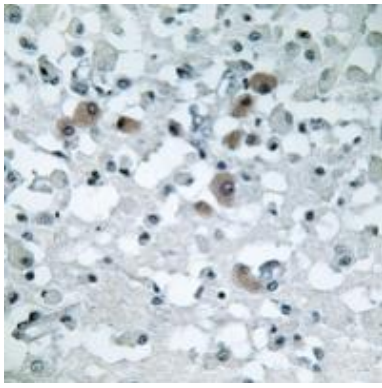
Western blotting:1:500 - 1:1000

Immunohistochemistry:1:50 - 1:100

## Images



Western blot analysis of KDEL3 expression in mouse spleen (A), rat spleen (B) whole cell lysates.



Immunohistochemical analysis of KDEL3 staining in human brain formalin fixed paraffin embedded tissue section. The section was pre-treated using heat mediated antigen retrieval with sodium citrate buffer (pH 6.0). The section was then incubated with the antibody at room temperature and detected using an HRP conjugated compact polymer system. DAB was used as the chromogen. The section was then counterstained with haematoxylin and mounted with DPX

---

Note: This product is for in vitro research use only and is not intended for use in humans or animals.