

MAGEA5 Antibody

Catalog No: #47831

Package Size: #47831-1 50ul #47831-2 100ul

Orders: order@signalwayantibody.comSupport: tech@signalwayantibody.com

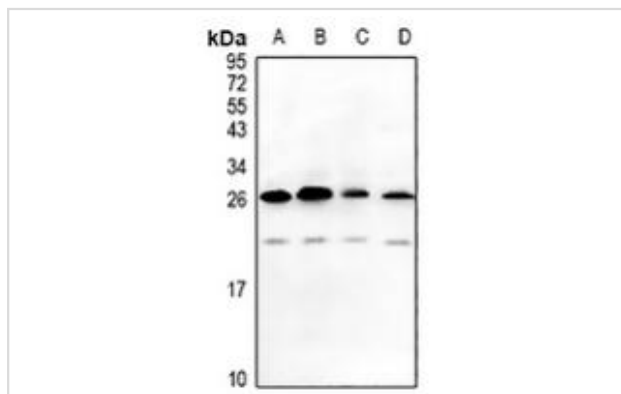
Description

Product Name	MAGEA5 Antibody
Host Species	Rabbit
Clonality	Polyclonal
Purification	The antibody was purified by immunogen affinity chromatography.
Applications	WB
Species Reactivity	Hu,Ms,Rt
Specificity	Recognizes endogenous levels of MAGEA5 protein.
Immunogen Description	KLH-conjugated synthetic peptide encompassing a sequence within the center region of human MAGEA5.
Target Name	MAGEA5
Other Names	MAGE5; Melanoma-associated antigen 5; Cancer/testis antigen 1.5; CT1.5; MAGE-5 antigen
Accession No.	Swiss-Prot#:P43359NCBI Gene ID:100533997; 4104
Calculated MW	36KD
Concentration	1 mg/ml
Formulation	Liquid in 0.42% Potassium phosphate, 0.87% Sodium chloride, pH 7.3, 30% glycerol, and 0.01% sodium azide.
Storage	Shipped at 4°C. Upon delivery aliquot and store at -20°C for one year. Avoid freeze/thaw cycles.

Application Details

Western blotting:1:500 - 1:1000

Images



Western blot analysis of MAGEA5 expression in mouse testis (A), rat testis (B), HeLa (C), A375 (D) whole cell lysates.

Note: This product is for in vitro research use only and is not intended for use in humans or animals.