

MED13L Antibody

Catalog No: #47832



Package Size: #47832-1 50ul #47832-2 100ul

Orders: order@signalwayantibody.com

Support: tech@signalwayantibody.com

Description

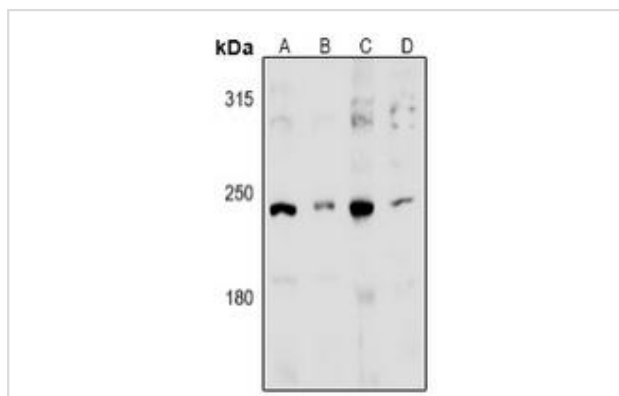
Product Name	MED13L Antibody
Host Species	Rabbit
Clonality	Polyclonal
Purification	The antibody was purified by immunogen affinity chromatography.
Applications	WB, IHC
Species Reactivity	Hu, Ms
Specificity	Recognizes endogenous levels of MED13L protein.
Immunogen Description	KLH-conjugated synthetic peptide encompassing a sequence within the center region of human MED13L.
Target Name	MED13L
Other Names	KIAA1025; PROSIT240; THRAP2; TRAP240L; Mediator of RNA polymerase II transcription subunit 13-like; Mediator complex subunit 13-like; Thyroid hormone receptor-associated protein 2; Thyroid hormone receptor-associated protein complex 240 kDa component-like
Accession No.	Swiss-Prot#:Q71F56NCBI Gene ID:23389
Calculated MW	242KD
Concentration	1 mg/ml
Formulation	Liquid in 0.42% Potassium phosphate, 0.87% Sodium chloride, pH 7.3, 30% glycerol, and 0.01% sodium azide.
Storage	Shipped at 4°C. Upon delivery aliquot and store at -20°C for one year. Avoid freeze/thaw cycles.

Application Details

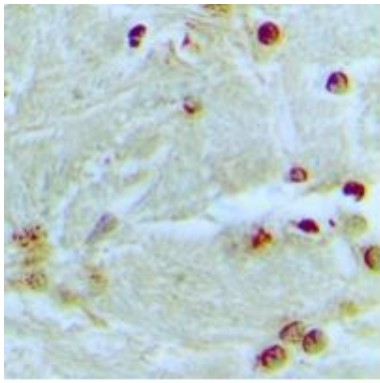
Western blotting:1:500 - 1:1000

Immunohistochemistry:1:50 - 1:100

Images



Western blot analysis of MED13L expression in HEK293T (A), COS7 (B), C6 (C), MEF (D) whole cell lysates.



Immunohistochemical analysis of MED13L staining in human brain formalin fixed paraffin embedded tissue section. The section was pre-treated using heat mediated antigen retrieval with sodium citrate buffer (pH 6.0). The section was then incubated with the antibody at room temperature and detected using an HRP conjugated compact polymer system. DAB was used as the chromogen. The section was then counterstained with haematoxylin and mounted with DPX

Note: This product is for in vitro research use only and is not intended for use in humans or animals.