

MRPL41 Antibody

Catalog No: #47836

Package Size: #47836-1 50ul #47836-2 100ul

Orders: order@signalwayantibody.comSupport: tech@signalwayantibody.com

Description

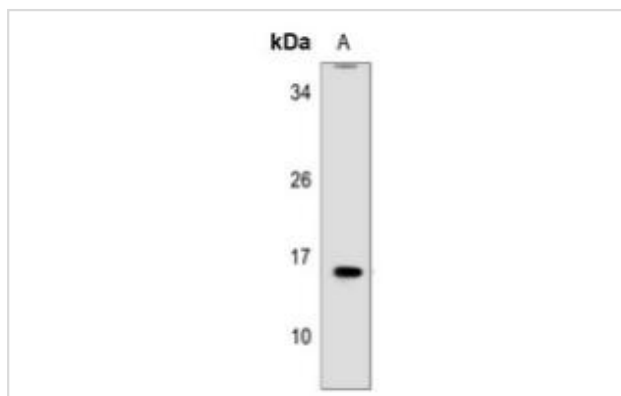
Product Name	MRPL41 Antibody
Host Species	Rabbit
Clonality	Polyclonal
Purification	The antibody was purified by immunogen affinity chromatography.
Applications	WB, IHC
Species Reactivity	Hu
Specificity	Recognizes endogenous levels of MRPL41 protein.
Immunogen Description	KLH-conjugated synthetic peptide encompassing a sequence within the center region of human MRPL41.
Target Name	MRPL41
Other Names	BMRP; MRPL27; RPML27; 39S ribosomal protein L41, mitochondrial; L41mt; MRP-L41; 39S ribosomal protein L27 homolog; Bcl-2-interacting mitochondrial ribosomal protein L41; Cell proliferation-inducing gene 3 protein; MRP-L27 homolog
Accession No.	Swiss-Prot#:Q8IXM3NCBI Gene ID:64975
Calculated MW	21KD
Concentration	1 mg/ml
Formulation	Liquid in 0.42% Potassium phosphate, 0.87% Sodium chloride, pH 7.3, 30% glycerol, and 0.01% sodium azide.
Storage	Shipped at 4°C. Upon delivery aliquot and store at -20°C for one year. Avoid freeze/thaw cycles.

Application Details

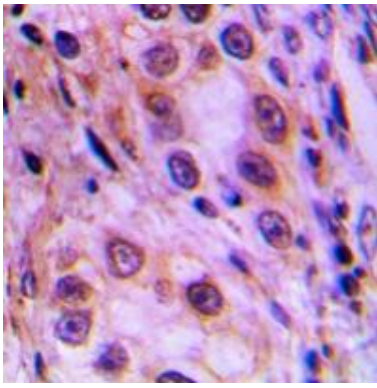
Western blotting:1:500 - 1:1000

Immunohistochemistry:1:50 - 1:100

Images



Western blot analysis of MRPL41 expression in human liver (A) whole cell lysates.



Immunohistochemical analysis of MRPL41 staining in human lung cancer formalin fixed paraffin embedded tissue section. The section was pre-treated using heat mediated antigen retrieval with sodium citrate buffer (pH 6.0). The section was then incubated with the antibody at room temperature and detected using an HRP conjugated compact polymer system. DAB was used as the chromogen. The section was then counterstained with haematoxylin and mounted with DPX.

Note: This product is for in vitro research use only and is not intended for use in humans or animals.