

## PLA1A Antibody

Catalog No: #47845

Package Size: #47845-1 50ul #47845-2 100ul

Orders: [order@signalwayantibody.com](mailto:order@signalwayantibody.com)Support: [tech@signalwayantibody.com](mailto:tech@signalwayantibody.com)

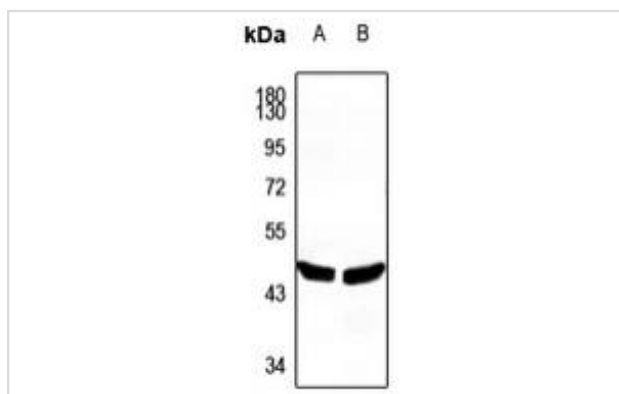
## Description

Product Name	PLA1A Antibody
Host Species	Rabbit
Clonality	Polyclonal
Purification	The antibody was purified by immunogen affinity chromatography.
Applications	WB, IHC
Species Reactivity	Hu,Ms,Rt
Specificity	Recognizes endogenous levels of PLA1A protein.
Immunogen Description	KLH-conjugated synthetic peptide encompassing a sequence within the C-term region of human PLA1A.
Target Name	PLA1A
Other Names	NMD; PSPLA1; Phospholipase A1 member A; Phosphatidylserine-specific phospholipase A1; PS-PLA1
Accession No.	Swiss-Prot#:Q53H76NCBI Gene ID:51365
Calculated MW	50KD
Concentration	1 mg/ml
Formulation	Liquid in 0.42% Potassium phosphate, 0.87% Sodium chloride, pH 7.3, 30% glycerol, and 0.01% sodium azide.
Storage	Shipped at 4°C. Upon delivery aliquot and store at -20°C for one year. Avoid freeze/thaw cycles.

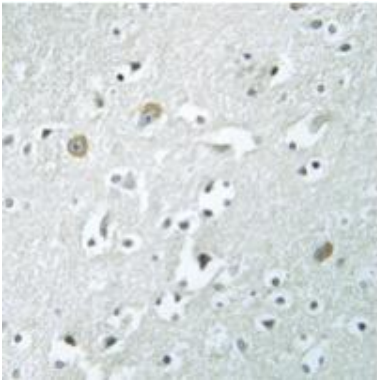
## Application Details

Western blotting:1:500 - 1:1000

## Images



Western blot analysis of PLA1A expression in mouse liver (A), rat liver (B) whole cell lysates.



Immunohistochemical analysis of PLA1A staining in human brain formalin fixed paraffin embedded tissue section. The section was pre-treated using heat mediated antigen retrieval with sodium citrate buffer (pH 6.0). The section was then incubated with the antibody at room temperature and detected using an HRP conjugated compact polymer system. DAB was used as the chromogen. The section was then counterstained with haematoxylin and mounted with DPX.

---

Note: This product is for in vitro research use only and is not intended for use in humans or animals.