

POLR3A Antibody

Catalog No: #47846



Package Size: #47846-1 50ul #47846-2 100ul

Orders: order@signalwayantibody.comSupport: tech@signalwayantibody.com

Description

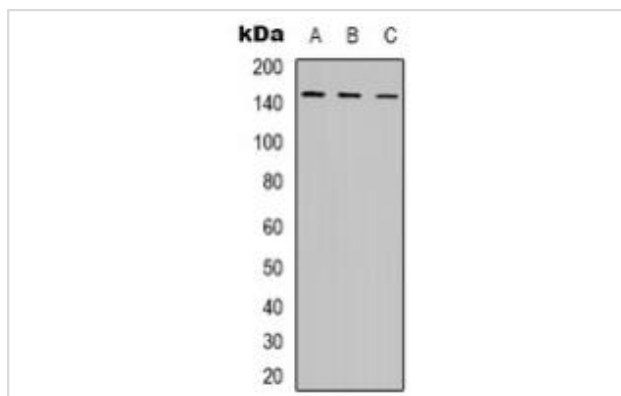
Product Name	POLR3A Antibody
Host Species	Rabbit
Clonality	Polyclonal
Purification	The antibody was purified by immunogen affinity chromatography.
Applications	WB, IHC
Species Reactivity	Hu,Ms,Rt
Specificity	Recognizes endogenous levels of POLR3A protein.
Immunogen Description	KLH-conjugated synthetic peptide encompassing a sequence within the N-term region of human POLR3A.
Target Name	POLR3A
Other Names	DNA-directed RNA polymerase III subunit RPC1; RNA polymerase III subunit C1; DNA-directed RNA polymerase III largest subunit; DNA-directed RNA polymerase III subunit A; RNA polymerase III 155 kDa subunit; RPC155; RNA polymerase III subunit C160
Accession No.	Swiss-Prot#:O14802NCBI Gene ID:11128
Calculated MW	156KD
Concentration	1 mg/ml
Formulation	Liquid in 0.42% Potassium phosphate, 0.87% Sodium chloride, pH 7.3, 30% glycerol, and 0.01% sodium azide.
Storage	Shipped at 4°C. Upon delivery aliquot and store at -20°C for one year. Avoid freeze/thaw cycles.

Application Details

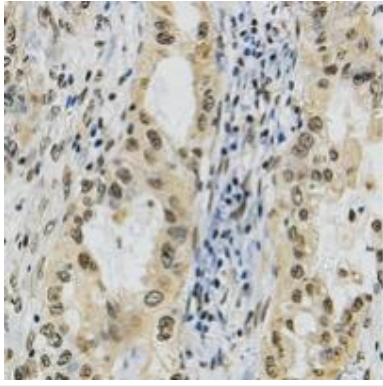
Western blotting:1:500 - 1:1000

Immunohistochemistry:1:50 - 1:100

Images



Western blot analysis of POLR3A expression in K562 (A), MCF7 (B), COS7 (C) whole cell lysates.



Immunohistochemical analysis of POLR3A staining in human lung cancer formalin fixed paraffin embedded tissue section. The section was pre-treated using heat mediated antigen retrieval with sodium citrate buffer (pH 6.0). The section was then incubated with the antibody at room temperature and detected using an HRP conjugated compact polymer system. DAB was used as the chromogen. The section was then counterstained with haematoxylin and mounted with DPX.

Note: This product is for in vitro research use only and is not intended for use in humans or animals.