

GPR10 Antibody

Catalog No: #47848

Package Size: #47848-1 50ul #47848-2 100ul

Orders: order@signalwayantibody.comSupport: tech@signalwayantibody.com

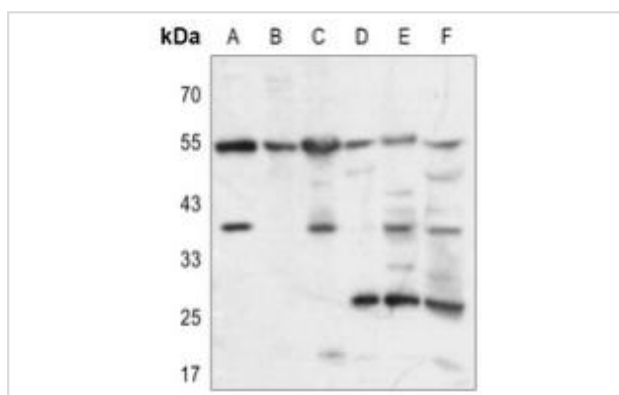
Description

Product Name	GPR10 Antibody
Host Species	Rabbit
Clonality	Polyclonal
Purification	The antibody was purified by immunogen affinity chromatography.
Applications	WB
Species Reactivity	Hu,Ms,Rt
Specificity	Recognizes endogenous levels of GPR10 protein.
Immunogen Description	KLH-conjugated synthetic peptide encompassing a sequence within the center region of human GPR10.
Target Name	PRLHR
Other Names	GPR10; GR3; Prolactin-releasing peptide receptor; PrRP receptor; PrRPR; G-protein coupled receptor 10; hGR3
Accession No.	Swiss-Prot#:P49683NCBI Gene ID:2834
Calculated MW	41KD
Concentration	1 mg/ml
Formulation	Liquid in 0.42% Potassium phosphate, 0.87% Sodium chloride, pH 7.3, 30% glycerol, and 0.01% sodium azide.
Storage	Shipped at 4°C. Upon delivery aliquot and store at -20°C for one year. Avoid freeze/thaw cycles.

Application Details

Western blotting:1:500 - 1:1000

Images



Western blot analysis of GPR10 expression in HEK293T (A), Hela (B), A2780 (C), mouse brain (D), mouse kidney (E), rat kidney (F) whole cell lysates

Note: This product is for in vitro research use only and is not intended for use in humans or animals.