

## p220 Antibody

Catalog No: #47850

Package Size: #47850-1 50ul #47850-2 100ul

Orders: [order@signalwayantibody.com](mailto:order@signalwayantibody.com)Support: [tech@signalwayantibody.com](mailto:tech@signalwayantibody.com)

## Description

Product Name	p220 Antibody
Host Species	Rabbit
Clonality	Polyclonal
Purification	The antibody was purified by immunogen affinity chromatography.
Applications	WB, IHC, IF/ICC
Species Reactivity	Hu, Ms
Specificity	Recognizes endogenous levels of p220 protein.
Immunogen Description	KLH-conjugated synthetic peptide encompassing a sequence within the center region of human RALGAPA2.
Target Name	RALGAPA2
Other Names	C20orf74; KIAA1272; Ral GTPase-activating protein subunit alpha-2; 250 kDa substrate of Akt; AS250; p220
Accession No.	Swiss-Prot#:Q2PPJ7NCBI Gene ID:57186
Calculated MW	250KD
Concentration	1 mg/ml
Formulation	Liquid in 0.42% Potassium phosphate, 0.87% Sodium chloride, pH 7.3, 30% glycerol, and 0.01% sodium azide.
Storage	Shipped at 4°C. Upon delivery aliquot and store at -20°C for one year. Avoid freeze/thaw cycles.

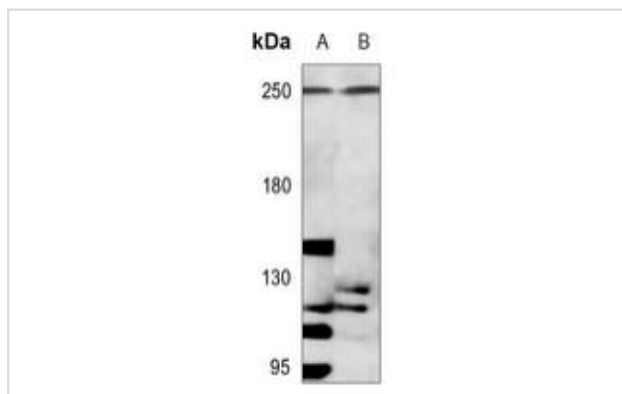
## Application Details

Western blotting:1:500 - 1:1000

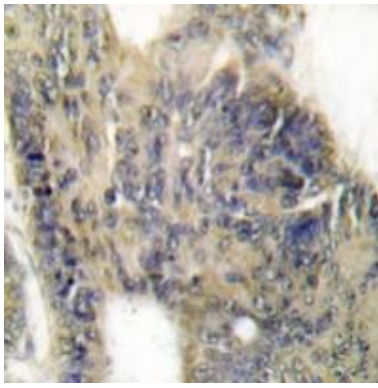
Immunohistochemistry:1:50 - 1:100

Immunofluorescence:1:100 - 1:300

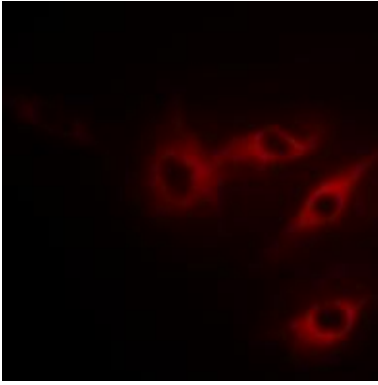
## Images



Western blot analysis of p220 expression in HCT116 (A), mouse kidney (B) whole cell lysates



Immunohistochemical analysis of p220 staining in human colon cancer formalin fixed paraffin embedded tissue section. The section was pre-treated using heat mediated antigen retrieval with sodium citrate buffer (pH 6.0). The section was then incubated with the antibody at room temperature and detected using an HRP conjugated compact polymer system. DAB was used as the chromogen. The section was then counterstained with haematoxylin and mounted with DPX



Immunofluorescent analysis of p220 staining in HeLa cells. Formalin-fixed cells were permeabilized with 0.1% Triton X-100 in TBS for 5-10 minutes and blocked with 3% BSA-PBS for 30 minutes at room temperature. Cells were probed with the primary antibody in 3% BSA-PBS and incubated overnight at 4 °C in a humidified chamber. Cells were washed with PBST and incubated with a AF594-conjugated secondary antibody (red) in PBS at room temperature in the dark.

---

Note: This product is for in vitro research use only and is not intended for use in humans or animals.