

## RPS27L Antibody

Catalog No: #47851

Package Size: #47851-1 50ul #47851-2 100ul

Orders: [order@signalwayantibody.com](mailto:order@signalwayantibody.com)Support: [tech@signalwayantibody.com](mailto:tech@signalwayantibody.com)

## Description

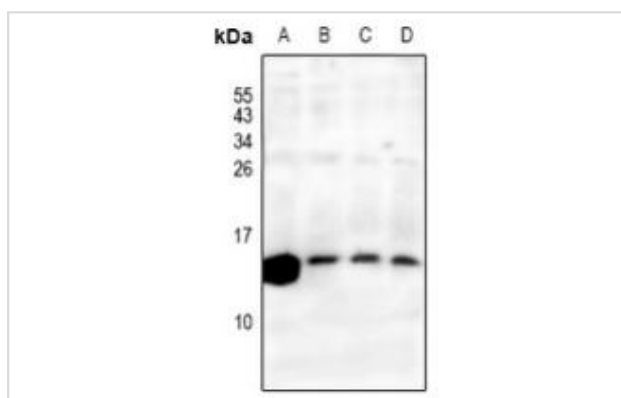
Product Name	RPS27L Antibody
Host Species	Rabbit
Clonality	Polyclonal
Purification	The antibody was purified by immunogen affinity chromatography.
Applications	WB, IHC
Species Reactivity	Hu,Ms,Rt
Specificity	Recognizes endogenous levels of RPS27L protein.
Immunogen Description	KLH-conjugated synthetic peptide encompassing a sequence within the N-term region of human RPS27L.
Target Name	RPS27L
Other Names	40S ribosomal protein S27-like
Accession No.	Swiss-Prot#:Q71UM5NCBI Gene ID:51065
Calculated MW	15KD
Concentration	1 mg/ml
Formulation	Liquid in 0.42% Potassium phosphate, 0.87% Sodium chloride, pH 7.3, 30% glycerol, and 0.01% sodium azide.
Storage	Shipped at 4°C. Upon delivery aliquot and store at -20°C for one year. Avoid freeze/thaw cycles.

## Application Details

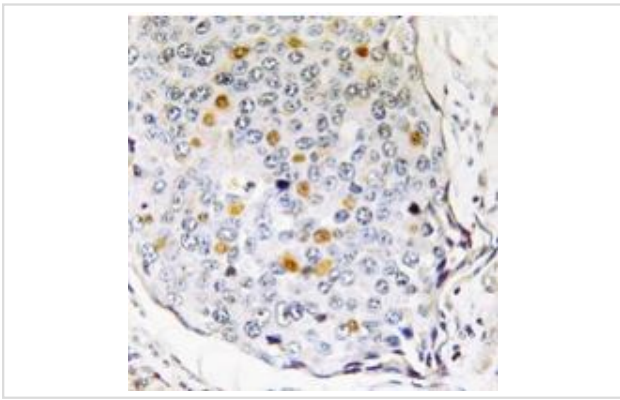
Western blotting:1:500 - 1:1000

Immunohistochemistry:1:50 - 1:100

## Images



Western blot analysis of RPS27L expression in mouse kidney (A), rat kidney (B), A549 (C), H1792 (D) whole cell lysates.



Immunohistochemical analysis of RPS27L staining in human breast cancer formalin fixed paraffin embedded tissue section. The section was pre-treated using heat mediated antigen retrieval with sodium citrate buffer (pH 6.0). The section was then incubated with the antibody at room temperature and detected using an HRP conjugated compact polymer system. DAB was used as the chromogen. The section was then counterstained with haematoxylin and mounted with DPX

---

Note: This product is for in vitro research use only and is not intended for use in humans or animals.