

GPR106 Antibody

Catalog No: #47853

Package Size: #47853-1 50ul #47853-2 100ul

Orders: order@signalwayantibody.comSupport: tech@signalwayantibody.com

Description

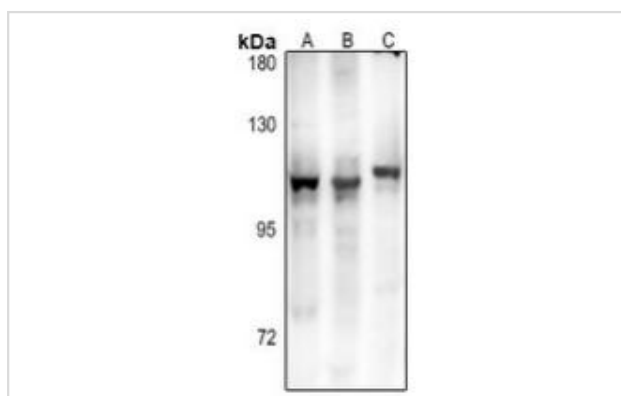
Product Name	GPR106 Antibody
Host Species	Rabbit
Clonality	Polyclonal
Purification	The antibody was purified by immunogen affinity chromatography.
Applications	WB, IF/ICC
Species Reactivity	Hu,Ms
Specificity	Recognizes endogenous levels of GPR106 protein.
Immunogen Description	KLH-conjugated synthetic peptide encompassing a sequence within the center region of human RXFP2.
Target Name	RXFP2
Other Names	GPR106; GREAT; LGR8; Relaxin receptor 2; G-protein coupled receptor 106; G-protein coupled receptor affecting testicular descent; Leucine-rich repeat-containing G-protein coupled receptor 8; Relaxin family peptide receptor 2
Accession No.	Swiss-Prot#:Q8WXD0NCBI Gene ID:122042
Calculated MW	86KD
Concentration	1 mg/ml
Formulation	Liquid in 0.42% Potassium phosphate, 0.87% Sodium chloride, pH 7.3, 30% glycerol, and 0.01% sodium azide.
Storage	Shipped at 4°C. Upon delivery aliquot and store at -20°C for one year. Avoid freeze/thaw cycles.

Application Details

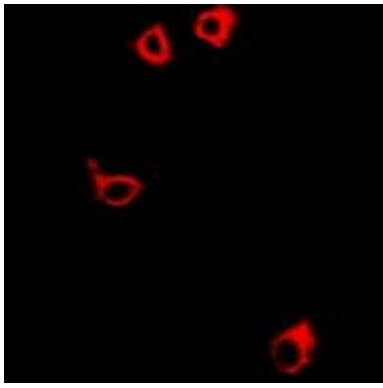
Western blotting:1:500 - 1:1000

Immunofluorescence:1:100 - 1:300

Images



Western blot analysis of GPR106 expression in Hela (A), Jurkat (B), mouse brain (C) whole cell lysates.



Immunofluorescent analysis of GPR106 staining in NIH3T3 cells. Formalin-fixed cells were permeabilized with 0.1% Triton X-100 in TBS for 5-10 minutes and blocked with 3% BSA-PBS for 30 minutes at room temperature. Cells were probed with the primary antibody in 3% BSA-PBS and incubated overnight at 4 °C in a humidified chamber. Cells were washed with PBST and incubated with a Alexa Fluor 594-conjugated secondary antibody (red) in PBS at room temperature in the dark.

Note: This product is for in vitro research use only and is not intended for use in humans or animals.