

SCN4B Antibody

Catalog No: #47854



Package Size: #47854-1 50ul #47854-2 100ul

Orders: order@signalwayantibody.comSupport: tech@signalwayantibody.com

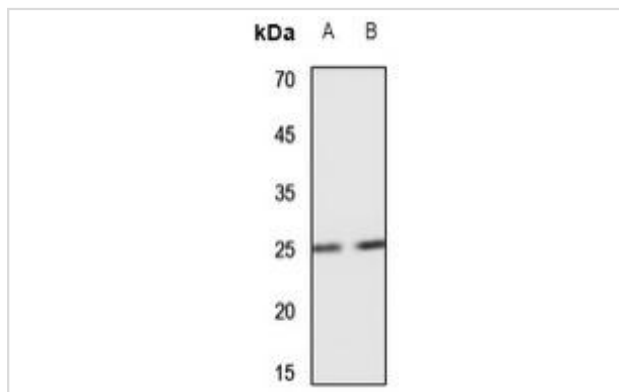
Description

Product Name	SCN4B Antibody
Host Species	Rabbit
Clonality	Polyclonal
Purification	The antibody was purified by immunogen affinity chromatography.
Applications	WB, IHC
Species Reactivity	Hu, Ms
Specificity	Recognizes endogenous levels of SCN4B protein.
Immunogen Description	KLH-conjugated synthetic peptide encompassing a sequence within the center region of human SCN4B.
Target Name	SCN4B
Other Names	Sodium channel subunit beta-4
Accession No.	Swiss-Prot#:Q8IWT1NCBI Gene ID:6330
Calculated MW	27KD
Concentration	1 mg/ml
Formulation	Liquid in 0.42% Potassium phosphate, 0.87% Sodium chloride, pH 7.3, 30% glycerol, and 0.01% sodium azide.
Storage	Shipped at 4°C. Upon delivery aliquot and store at -20°C for one year. Avoid freeze/thaw cycles.

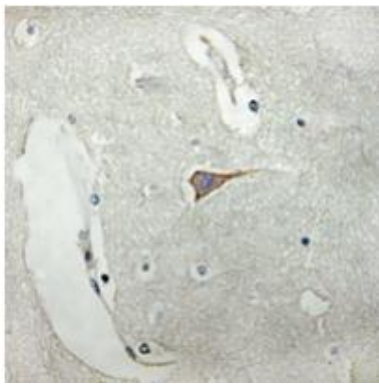
Application Details

Western blotting: 1:500 - 1:1000

Images



Western blot analysis of SCN4B expression in mouse kidney (A), mouse lung (B) whole cell lysates



Immunohistochemical analysis of SCN4B staining in human brain formalin fixed paraffin embedded tissue section. The section was pre-treated using heat mediated antigen retrieval with sodium citrate buffer (pH 6.0). The section was then incubated with the antibody at room temperature and detected using an HRP conjugated compact polymer system. DAB was used as the chromogen. The section was then counterstained with haematoxylin and mounted with DPX.

Note: This product is for in vitro research use only and is not intended for use in humans or animals.