

## CHST1 Antibody

Catalog No: #47868



Package Size: #47868-1 50ul #47868-2 100ul

Orders: order@signalwayantibody.com

Support: tech@signalwayantibody.com

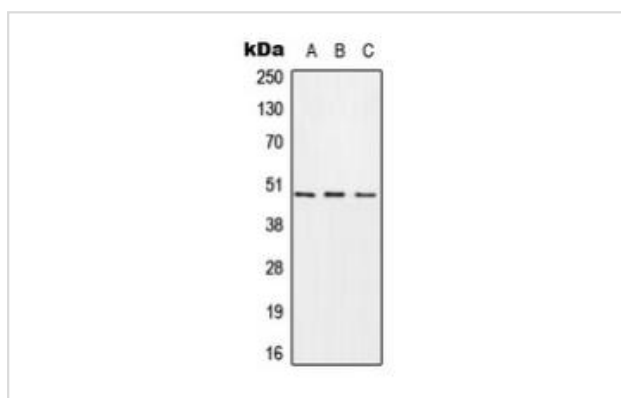
## Description

Product Name	CHST1 Antibody
Host Species	Rabbit
Clonality	Polyclonal
Purification	The antibody was purified by immunogen affinity chromatography.
Applications	WB
Species Reactivity	Hu,Ms,Rt
Specificity	Recognizes endogenous levels of CHST1 protein.
Immunogen Description	KLH-conjugated synthetic peptide encompassing a sequence within the center region of human CHST1.
Target Name	CHST1
Other Names	Carbohydrate sulfotransferase 1; Galactose/N-acetylglucosamine/N-acetylglucosamine 6-O-sulfotransferase 1; GST-1; Keratan sulfate Gal-6 sulfotransferase; KS6ST; KSGal6ST; KSST
Accession No.	Swiss-Prot#:O43916NCBI Gene ID:8534
Calculated MW	47KD
Concentration	1 mg/ml
Formulation	Liquid in 0.42% Potassium phosphate, 0.87% Sodium chloride, pH 7.3, 30% glycerol, and 0.01% sodium azide.
Storage	Shipped at 4°C. Upon delivery aliquot and store at -20°C for one year. Avoid freeze/thaw cycles.

## Application Details

Western blotting:1:500 - 1:1000

## Images



Western blot analysis of CHST1 expression in A549 (A), Raw264.7 (B), PC12 (C) whole cell lysates.

Note: This product is for in vitro research use only and is not intended for use in humans or animals.