

RAB33A Antibody

Catalog No: #47871



Package Size: #47871-1 50ul #47871-2 100ul

Orders: order@signalwayantibody.comSupport: tech@signalwayantibody.com

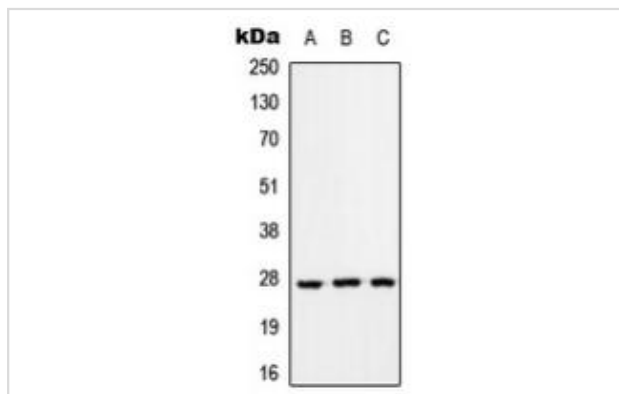
Description

Product Name	RAB33A Antibody
Host Species	Rabbit
Clonality	Polyclonal
Purification	The antibody was purified by immunogen affinity chromatography.
Applications	WB
Species Reactivity	Hu,Ms,Rt
Specificity	Recognizes endogenous levels of RAB33A protein.
Immunogen Description	KLH-conjugated synthetic peptide encompassing a sequence within the center region of human RAB33A.
Target Name	RAB33A
Other Names	RABS10; Ras-related protein Rab-33A; Small GTP-binding protein S10
Accession No.	Swiss-Prot#:Q14088NCBI Gene ID:9363
Calculated MW	27KD
Concentration	1 mg/ml
Formulation	Liquid in 0.42% Potassium phosphate, 0.87% Sodium chloride, pH 7.3, 30% glycerol, and 0.01% sodium azide.
Storage	Shipped at 4°C. Upon delivery aliquot and store at -20°C for one year. Avoid freeze/thaw cycles.

Application Details

Western blotting:1:500 - 1:1000

Images



"Western blot analysis of RAB33A expression in HEK293T (A), Raw264.7 (B), PC12 (C) whole cell lysates. "

Note: This product is for in vitro research use only and is not intended for use in humans or animals.