

SCAMP1 Antibody

Catalog No: #47872



Package Size: #47872-1 50ul #47872-2 100ul

Orders: order@signalwayantibody.comSupport: tech@signalwayantibody.com

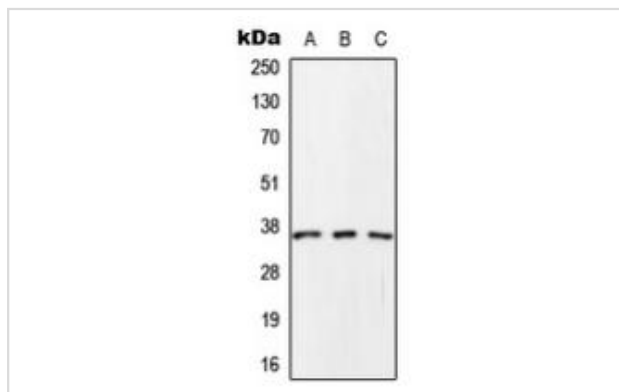
Description

Product Name	SCAMP1 Antibody
Host Species	Rabbit
Clonality	Polyclonal
Purification	The antibody was purified by immunogen affinity chromatography.
Applications	WB
Species Reactivity	Hu,Ms,Rt
Specificity	Recognizes endogenous levels of SCAMP1 protein.
Immunogen Description	KLH-conjugated synthetic peptide encompassing a sequence within the C-term region of human SCAMP1.
Target Name	SCAMP1
Other Names	SCAMP; Secretory carrier-associated membrane protein 1; Secretory carrier membrane protein 1
Accession No.	Swiss-Prot#:O15126NCBI Gene ID:9522
Calculated MW	37KD
Concentration	1 mg/ml
Formulation	Liquid in 0.42% Potassium phosphate, 0.87% Sodium chloride, pH 7.3, 30% glycerol, and 0.01% sodium azide.
Storage	Shipped at 4°C. Upon delivery aliquot and store at -20°C for one year. Avoid freeze/thaw cycles.

Application Details

Western blotting:1:500 - 1:1000

Images



"Western blot analysis of SCAMP1 expression in HeLa (A), Raw264.7 (B), rat brain (C) whole cell lysates"

Note: This product is for in vitro research use only and is not intended for use in humans or animals.