

SAP130 Antibody

Catalog No: #47873



Package Size: #47873-1 50ul #47873-2 100ul

Orders: order@signalwayantibody.comSupport: tech@signalwayantibody.com

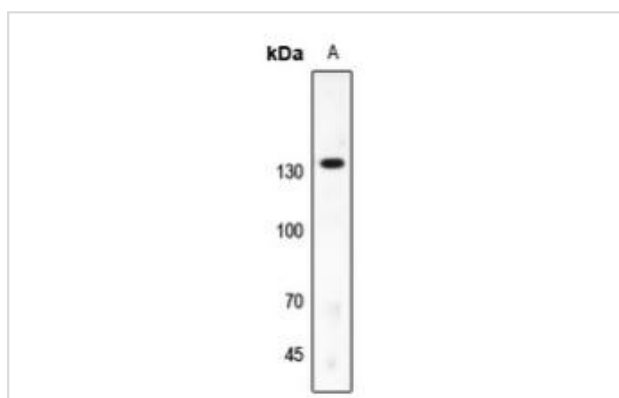
Description

Product Name	SAP130 Antibody
Host Species	Rabbit
Clonality	Polyclonal
Purification	The antibody was purified by immunogen affinity chromatography.
Applications	WB
Species Reactivity	Hu,Ms,Rt
Specificity	Recognizes endogenous levels of SAP130 protein.
Immunogen Description	KLH-conjugated synthetic peptide encompassing a sequence within the center region of human SAP130.
Target Name	SF3B3
Other Names	KIAA0017; SAP130; Splicing factor 3B subunit 3; Pre-mRNA-splicing factor SF3b 130 kDa subunit; SF3b130; STAF130; Spliceosome-associated protein 130; SAP 130
Accession No.	Swiss-Prot#:Q15393NCBI Gene ID:23450
Calculated MW	130KD
Concentration	1 mg/ml
Formulation	Liquid in 0.42% Potassium phosphate, 0.87% Sodium chloride, pH 7.3, 30% glycerol, and 0.01% sodium azide.
Storage	Shipped at 4°C. Upon delivery aliquot and store at -20°C for one year. Avoid freeze/thaw cycles.

Application Details

Western blotting:1:500 - 1:1000

Images



"Western blot analysis of SAP130 expression in zebrafish (A) whole cell lysates"

Note: This product is for in vitro research use only and is not intended for use in humans or animals.