

## KLF1/5/7 Antibody

Catalog No: #47880

Package Size: #47880-1 50ul #47880-2 100ul

Orders: [order@signalwayantibody.com](mailto:order@signalwayantibody.com)Support: [tech@signalwayantibody.com](mailto:tech@signalwayantibody.com)

## Description

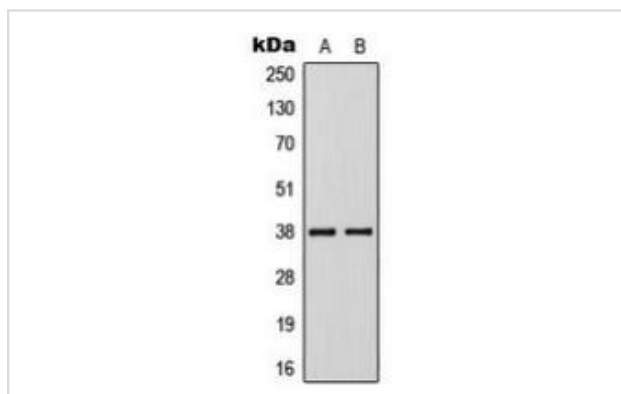
Product Name	KLF1/5/7 Antibody
Host Species	Rabbit
Clonality	Polyclonal
Purification	The antibody was purified by immunogen affinity chromatography.
Applications	WB
Species Reactivity	Hu,Rt
Specificity	Recognizes endogenous levels of KLF1/5/7 protein.
Immunogen Description	KLH-conjugated synthetic peptide encompassing a sequence within the C-term region of human KLF1/5/7.
Target Name	KLF1; KLF5; KLF7
Other Names	KLF1; EKLF; Krueppel-like factor 1; Erythroid krueppel-like transcription factor; EKLF; KLF5; BTEB2; CKLF; IKLF; Krueppel-like factor 5; Basic transcription element-binding protein 2; BTE-binding protein 2; Colon krueppel-like factor; GC-box-binding protein 2; Intestinal-enriched krueppel-like factor; Transcription factor BTEB2; KLF7; UKLF; Krueppel-like factor 7; Ubiquitous krueppel-like factor
Accession No.	Swiss-Prot#:Q13351; Q13887; O75840NCBI Gene ID:10661; 688; 8609
Calculated MW	38KD
Concentration	1 mg/ml
Formulation	Liquid in 0.42% Potassium phosphate, 0.87% Sodium chloride, pH 7.3, 30% glycerol, and 0.01% sodium azide.
Storage	Shipped at 4°C. Upon delivery aliquot and store at -20°C for one year. Avoid freeze/thaw cycles.

## Application Details

Western blotting:1:500 - 1:1000

Immunofluorescence:1:100 - 1:300

## Images



"Western blot analysis of KLF1/5/7 expression in Jurkat (A), VEC (B) whole cell lysates."

---

Note: This product is for in vitro research use only and is not intended for use in humans or animals.