

FOXC1/2 Antibody

Catalog No: #47883



Package Size: #47883-1 50ul #47883-2 100ul

Orders: order@signalwayantibody.comSupport: tech@signalwayantibody.com

Description

Product Name	FOXC1/2 Antibody
Host Species	Rabbit
Clonality	Polyclonal
Purification	The antibody was purified by immunogen affinity chromatography.
Applications	WB
Species Reactivity	Hu,Ms,Rt
Specificity	Recognizes endogenous levels of FOXC1/2 protein.
Immunogen Description	KLH-conjugated synthetic peptide encompassing a sequence within the center region of human FOXC1/2.
Target Name	FOXC1; FOXC2
Other Names	FOXC1; FKHL7; FREAC3; Forkhead box protein C1; Forkhead-related protein FKHL7; Forkhead-related transcription factor 3; FREAC-3; FOXC2; FKHL14; MFH1; Forkhead box protein C2; Forkhead-related protein FKHL14; Mesenchyme fork head protein 1; MFH-1 protein; Transcription factor FKHL-14
Accession No.	Swiss-Prot#:Q12948; Q99958NCBI Gene ID:2296; 2303
Calculated MW	57KD
Concentration	1 mg/ml
Formulation	Liquid in 0.42% Potassium phosphate, 0.87% Sodium chloride, pH 7.3, 30% glycerol, and 0.01% sodium azide.
Storage	Shipped at 4°C. Upon delivery aliquot and store at -20°C for one year. Avoid freeze/thaw cycles.

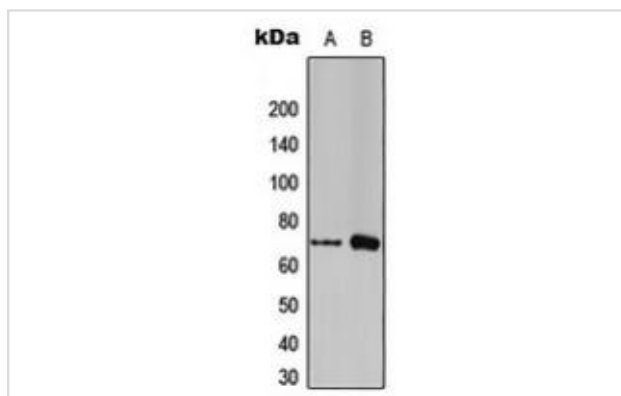
Application Details

Western blotting:1:500 - 1:1000

Immunohistochemistry:1:50 - 1:100

Immunofluorescence:1:100 - 1:300

Images



"Western blot analysis of FOXC1/2 expression in THP1 (A), RAW264.7 (B) whole cell lysates. "

Note: This product is for in vitro research use only and is not intended for use in humans or animals.