

EIF3L Antibody

Catalog No: #47890

Package Size: #47890-1 50ul #47890-2 100ul

Orders: order@signalwayantibody.comSupport: tech@signalwayantibody.com

Description

Product Name	EIF3L Antibody
Host Species	Rabbit
Clonality	Polyclonal
Purification	The antibody was purified by immunogen affinity chromatography.
Applications	WB, IHC, IF/ICC
Species Reactivity	Hu,Ms,Rt
Specificity	Recognizes endogenous levels of EIF3L protein.
Immunogen Description	KLH-conjugated synthetic peptide encompassing a sequence within the N-term region of human EIF3L.
Target Name	EIF3L
Other Names	EIF3EIP; EIF3S6IP; Eukaryotic translation initiation factor 3 subunit L; eIF3I; Eukaryotic translation initiation factor 3 subunit 6-interacting protein; Eukaryotic translation initiation factor 3 subunit E-interacting protein
Accession No.	Swiss-Prot#:Q9Y262NCBI Gene ID:51386
Calculated MW	67KD
Concentration	1 mg/ml
Formulation	Liquid in 0.42% Potassium phosphate, 0.87% Sodium chloride, pH 7.3, 30% glycerol, and 0.01% sodium azide.
Storage	Shipped at 4°C. Upon delivery aliquot and store at -20°C for one year. Avoid freeze/thaw cycles.

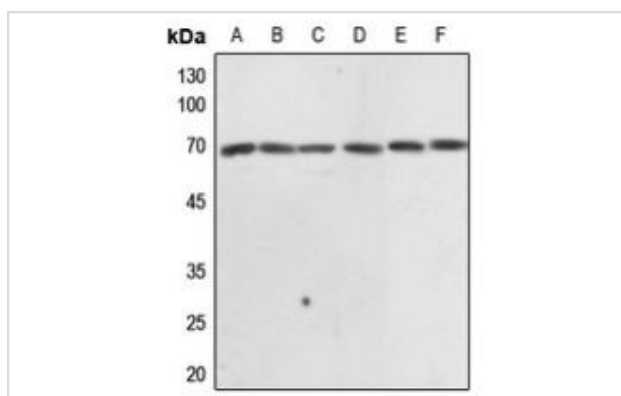
Application Details

Western blotting:1:500 - 1:1000

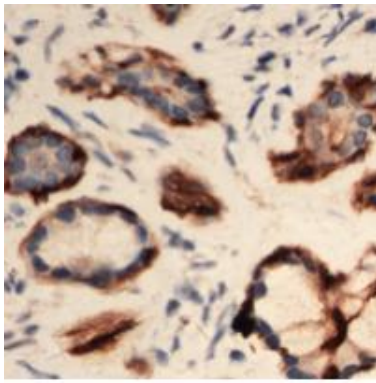
Immunohistochemistry:1:50 - 1:100

Immunofluorescence:1:100 - 1:300

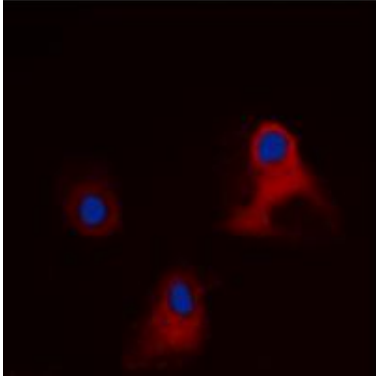
Images



Western blot analysis of EIF3L expression in HEK293T (A), HeLa (B), HGC27 (C), mouse kidney (D), rat kidney (E), rat testis (F) whole cell lysates.



Immunohistochemical analysis of EIF3L staining in human Pancreas formalin fixed paraffin embedded tissue section. The section was pre-treated using heat mediated antigen retrieval with sodium citrate buffer (pH 6.0). The section was then incubated with the antibody at room temperature and detected using an HRP conjugated compact polymer system. DAB was used as the chromogen. The section was then counterstained with haematoxylin and mounted with DPX



Immunofluorescent analysis of EIF3L staining in HEK293 cells. Formalin-fixed cells were permeabilized with 0.1% Triton X-100 in TBS for 5-10 minutes and blocked with 3% BSA-PBS for 30 minutes at room temperature. Cells were probed with the primary antibody in 3% BSA-PBS and incubated overnight at 4 °C in a humidified chamber. Cells were washed with PBST and incubated with a DyLight 594-conjugated secondary antibody (red) in PBS at room temperature in the dark. DAPI was used to stain the cell nuclei (blue).

Note: This product is for in vitro research use only and is not intended for use in humans or animals.