

Frizzled 1/2/7 Antibody

Catalog No: #47891

Package Size: #47891-1 50ul #47891-2 100ul

Orders: order@signalwayantibody.comSupport: tech@signalwayantibody.com

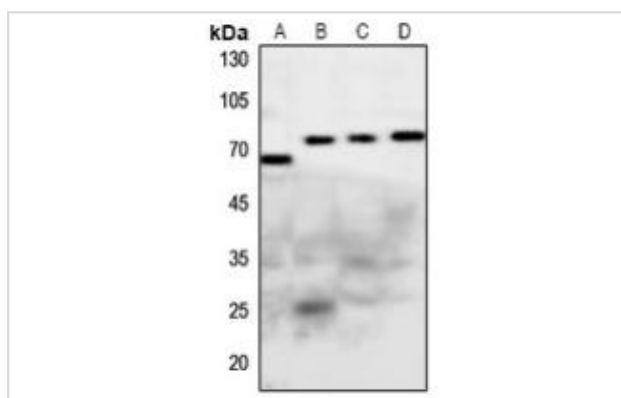
Description

Product Name	Frizzled 1/2/7 Antibody
Host Species	Rabbit
Clonality	Polyclonal
Purification	The antibody was purified by immunogen affinity chromatography.
Applications	WB, IF/ICC
Species Reactivity	Hu,Ms,Rt
Specificity	Recognizes endogenous levels of Frizzled 1/2/7 protein.
Immunogen Description	KLH-conjugated synthetic peptide encompassing a sequence within the N-term region of human Frizzled 1/2/7.
Target Name	FZD1; FZD2; FZD7
Other Names	Frizzled-7; Fz-7; hFz7; FzE3
Accession No.	Swiss-Prot#:Q9UP38; Q14332; O75084NCBI Gene ID:8324
Calculated MW	64KD
Concentration	1 mg/ml
Formulation	Liquid in 0.42% Potassium phosphate, 0.87% Sodium chloride, pH 7.3, 30% glycerol, and 0.01% sodium azide.
Storage	Shipped at 4°C. Upon delivery aliquot and store at -20°C for one year. Avoid freeze/thaw cycles.

Application Details

Western blotting: 1:500 - 1:1000

Images



Western blot analysis of Frizzled 1/2/7 expression in Hela (A), mouse heart (B), rat heart (C), rat kidney (D) whole cell lysates.



Immunofluorescent analysis of Frizzled 1/2/7 staining in MCF7 cells. Formalin-fixed cells were permeabilized with 0.1% Triton X-100 in TBS for 5-10 minutes and blocked with 3% BSA-PBS for 30 minutes at room temperature. Cells were probed with the primary antibody in 3% BSA-PBS and incubated overnight at 4 °C in a humidified chamber. Cells were washed with PBST and incubated with a AF594-conjugated secondary antibody (red) in PBS at room temperature in the dark.

Note: This product is for in vitro research use only and is not intended for use in humans or animals.