

GPR123 Antibody

Catalog No: #47892



Package Size: #47892-1 50ul #47892-2 100ul

Orders: order@signalwayantibody.comSupport: tech@signalwayantibody.com

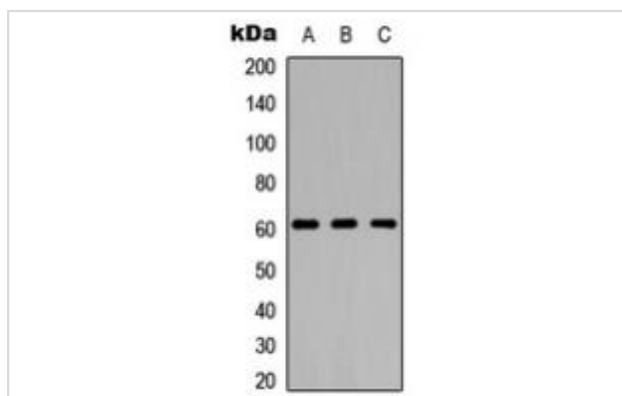
Description

| | |
|-----------------------|---|
| Product Name | GPR123 Antibody |
| Host Species | Rabbit |
| Clonality | Polyclonal |
| Purification | The antibody was purified by immunogen affinity chromatography. |
| Applications | WB, IF/ICC |
| Species Reactivity | Hu,Ms,Rt |
| Specificity | Recognizes endogenous levels of GPR123 protein. |
| Immunogen Description | KLH-conjugated synthetic peptide encompassing a sequence within the C-term region of human GPR123. |
| Target Name | GPR123 |
| Other Names | KIAA1828; Probable G-protein coupled receptor 123 |
| Accession No. | Swiss-Prot#:Q86SQ6NCBI Gene ID:84435 |
| Calculated MW | 137KD |
| Concentration | 1 mg/ml |
| Formulation | Liquid in 0.42% Potassium phosphate, 0.87% Sodium chloride, pH 7.3, 30% glycerol, and 0.01% sodium azide. |
| Storage | Shipped at 4°C. Upon delivery aliquot and store at -20°C for one year. Avoid freeze/thaw cycles. |

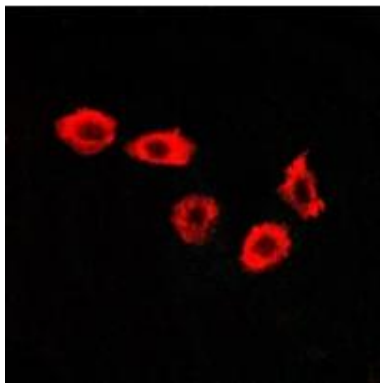
Application Details

Western blotting:1:500 - 1:1000

Images



Western blot analysis of GPR123 expression in HeLa (A), Raw264.7 (B), PC12 (C) whole cell lysates.



Immunofluorescent analysis of GPR123 staining in HuvEc cells. Formalin-fixed cells were permeabilized with 0.1% Triton X-100 in TBS for 5-10 minutes and blocked with 3% BSA-PBS for 30 minutes at room temperature. Cells were probed with the primary antibody in 3% BSA-PBS and incubated overnight at 4 °C in a humidified chamber. Cells were washed with PBST and incubated with a AF594-conjugated secondary antibody (red) in PBS at room temperature in the dark.

Note: This product is for in vitro research use only and is not intended for use in humans or animals.