

JMY Antibody

Catalog No: #47894

Package Size: #47894-1 50ul #47894-2 100ul

Orders: order@signalwayantibody.comSupport: tech@signalwayantibody.com

Description

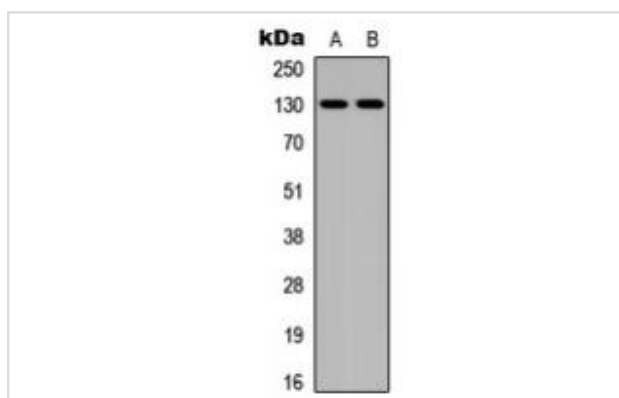
Product Name	JMY Antibody
Host Species	Rabbit
Clonality	Polyclonal
Purification	The antibody was purified by immunogen affinity chromatography.
Applications	WB, IHC
Species Reactivity	Hu,Ms
Specificity	Recognizes endogenous levels of JMY protein.
Immunogen Description	KLH-conjugated synthetic peptide encompassing a sequence within the C-term region of human JMY.
Target Name	JMY
Other Names	Junction-mediating and -regulatory protein
Accession No.	Swiss-Prot#:Q8N9B5NCBI Gene ID:133746
Calculated MW	133KD
Concentration	1 mg/ml
Formulation	Liquid in 0.42% Potassium phosphate, 0.87% Sodium chloride, pH 7.3, 30% glycerol, and 0.01% sodium azide.
Storage	Shipped at 4°C. Upon delivery aliquot and store at -20°C for one year. Avoid freeze/thaw cycles.

Application Details

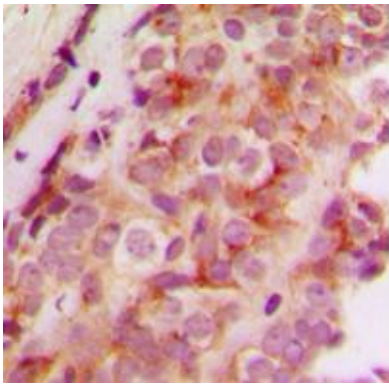
Western blotting:1:500 - 1:1000

Immunohistochemistry:1:50 - 1:100

Images



Western blot analysis of JMY expression in Jurkat (A), MCF7 (B) whole cell lysates



Immunohistochemical analysis of JMY staining in human breast cancer formalin fixed paraffin embedded tissue section. The section was pre-treated using heat mediated antigen retrieval with sodium citrate buffer (pH 6.0). The section was then incubated with the antibody at room temperature and detected using an HRP conjugated compact polymer system. DAB was used as the chromogen. The section was then counterstained with haematoxylin and mounted with DPX.

Note: This product is for in vitro research use only and is not intended for use in humans or animals.