

NOM1 Antibody

Catalog No: #47900



Package Size: #47900-1 50ul #47900-2 100ul

Orders: order@signalwayantibody.comSupport: tech@signalwayantibody.com

Description

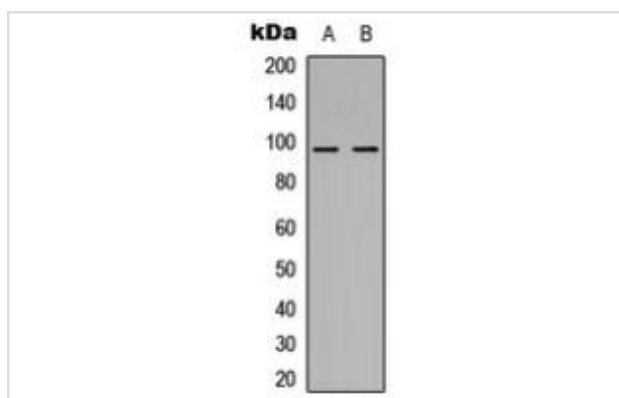
Product Name	NOM1 Antibody
Host Species	Rabbit
Clonality	Polyclonal
Purification	The antibody was purified by immunogen affinity chromatography.
Applications	WB, IHC
Species Reactivity	Hu,Rt
Specificity	Recognizes endogenous levels of NOM1 protein.
Immunogen Description	KLH-conjugated synthetic peptide encompassing a sequence within the C-term region of human NOM1.
Target Name	NOM1
Other Names	C7orf3; Nucleolar MIF4G domain-containing protein 1; SGD1 homolog
Accession No.	Swiss-Prot#:Q5C9Z4NCBI Gene ID:64434
Calculated MW	96KD
Concentration	1 mg/ml
Formulation	Liquid in 0.42% Potassium phosphate, 0.87% Sodium chloride, pH 7.3, 30% glycerol, and 0.01% sodium azide.
Storage	Shipped at 4°C. Upon delivery aliquot and store at -20°C for one year. Avoid freeze/thaw cycles.

Application Details

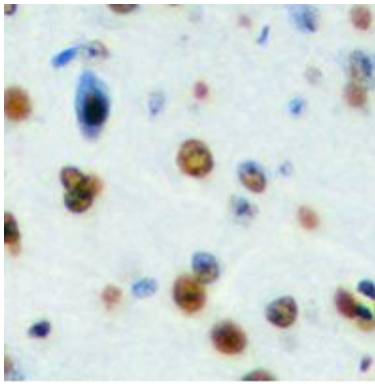
Western blotting:1:500 - 1:1000

Immunohistochemistry:1:50 - 1:100

Images



Western blot analysis of NOM1 expression in HEK293T (A), H9C2 (B) whole cell lysates.



Immunohistochemical analysis of NOM1 staining in human brain formalin fixed paraffin embedded tissue section. The section was pre-treated using heat mediated antigen retrieval with sodium citrate buffer (pH 6.0). The section was then incubated with the antibody at room temperature and detected using an HRP conjugated compact polymer system. DAB was used as the chromogen. The section was then counterstained with haematoxylin and mounted with DPX.

Note: This product is for in vitro research use only and is not intended for use in humans or animals.