

## POTEA Antibody

Catalog No: #47904

Package Size: #47904-1 50ul #47904-2 100ul

Orders: [order@signalwayantibody.com](mailto:order@signalwayantibody.com)Support: [tech@signalwayantibody.com](mailto:tech@signalwayantibody.com)

## Description

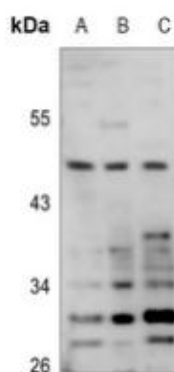
Product Name	POTEA Antibody
Host Species	Rabbit
Clonality	Polyclonal
Purification	The antibody was purified by immunogen affinity chromatography.
Applications	WB, IHC
Species Reactivity	Hu,Ms,Rt
Specificity	Recognizes endogenous levels of POTEA protein.
Immunogen Description	KLH-conjugated synthetic peptide encompassing a sequence within the C-term region of human POTEA.
Target Name	POTEA
Other Names	A26A1; POTE8; POTE ankyrin domain family member A; ANKRD26-like family A member 1; Prostate, ovary, testis-expressed protein on chromosome 8; POTE-8
Accession No.	Swiss-Prot#:Q6S8J7NCBI Gene ID:340441
Calculated MW	56KD
Concentration	1 mg/ml
Formulation	Liquid in 0.42% Potassium phosphate, 0.87% Sodium chloride, pH 7.3, 30% glycerol, and 0.01% sodium azide.
Storage	Shipped at 4°C. Upon delivery aliquot and store at -20°C for one year. Avoid freeze/thaw cycles.

## Application Details

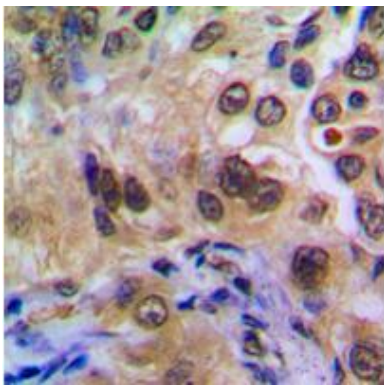
Western blotting:1:500 - 1:1000

Immunohistochemistry:1:50 - 1:100

## Images



Western blot analysis of POTEA expression in HEK293T (A), HepG2 (B), MCF7 (C) whole cell lysates



Immunohistochemical analysis of POTEA staining in human breast cancer formalin fixed paraffin embedded tissue section. The section was pre-treated using heat mediated antigen retrieval with sodium citrate buffer (pH 6.0). The section was then incubated with the antibody at room temperature and detected using an HRP conjugated compact polymer system. DAB was used as the chromogen. The section was then counterstained with haematoxylin and mounted with DPX.

---

Note: This product is for in vitro research use only and is not intended for use in humans or animals.