

## RPL22 Antibody

Catalog No: #47906



Package Size: #47906-1 50ul #47906-2 100ul

Orders: [order@signalwayantibody.com](mailto:order@signalwayantibody.com)Support: [tech@signalwayantibody.com](mailto:tech@signalwayantibody.com)

## Description

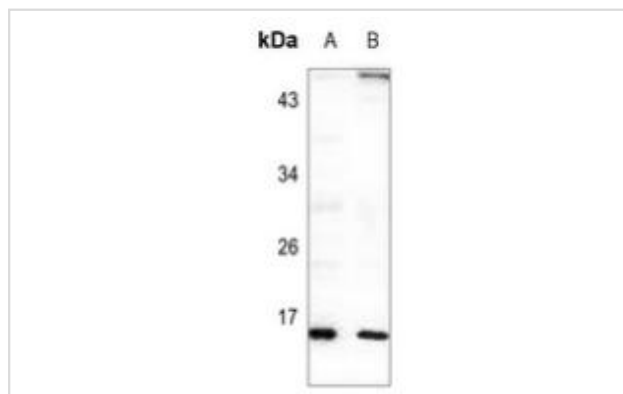
Product Name	RPL22 Antibody
Host Species	Rabbit
Clonality	Polyclonal
Purification	The antibody was purified by immunogen affinity chromatography.
Applications	WB, IHC
Species Reactivity	Hu, Ms, Rt
Specificity	Recognizes endogenous levels of RPL22 protein.
Immunogen Description	KLH-conjugated synthetic peptide encompassing a sequence within the center region of human RPL22.
Target Name	RPL22
Other Names	60S ribosomal protein L22; EBER-associated protein; EAP; Epstein-Barr virus small RNA-associated protein; Heparin-binding protein HBp15
Accession No.	Swiss-Prot#:P35268NCBI Gene ID:6146
Calculated MW	14KD
Concentration	1 mg/ml
Formulation	Liquid in 0.42% Potassium phosphate, 0.87% Sodium chloride, pH 7.3, 30% glycerol, and 0.01% sodium azide.
Storage	Shipped at 4°C. Upon delivery aliquot and store at -20°C for one year. Avoid freeze/thaw cycles.

## Application Details

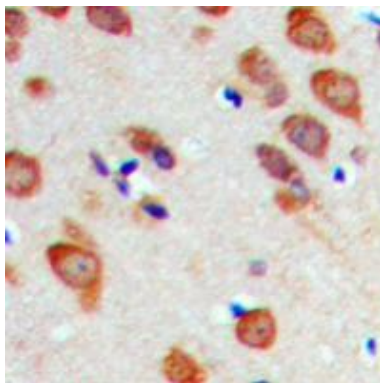
Western blotting: 1:500 - 1:1000

Immunohistochemistry: 1:50 - 1:100

## Images



Western blot analysis of RPL22 expression in SP20 (A), C6 (B) whole cell lysates.



Immunohistochemical analysis of RPL22 staining in human brain formalin fixed paraffin embedded tissue section. The section was pre-treated using heat mediated antigen retrieval with sodium citrate buffer (pH 6.0). The section was then incubated with the antibody at room temperature and detected using an HRP conjugated compact polymer system. DAB was used as the chromogen. The section was then counterstained with haematoxylin and mounted with DPX.

---

Note: This product is for in vitro research use only and is not intended for use in humans or animals.