

RPL37A Antibody

Catalog No: #47907



Package Size: #47907-1 50ul #47907-2 100ul

Orders: order@signalwayantibody.comSupport: tech@signalwayantibody.com

Description

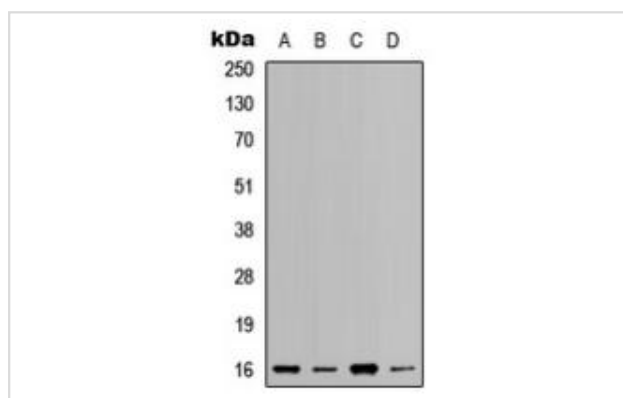
Product Name	RPL37A Antibody
Host Species	Rabbit
Clonality	Polyclonal
Purification	The antibody was purified by immunogen affinity chromatography.
Applications	WB, IHC
Species Reactivity	Hu,Ms,Rt
Specificity	Recognizes endogenous levels of RPL37A protein.
Immunogen Description	KLH-conjugated synthetic peptide encompassing a sequence within the center region of human RPL37A.
Target Name	RPL37A
Other Names	60S ribosomal protein L37a
Accession No.	Swiss-Prot#:P61513NCBI Gene ID:6168
Calculated MW	10KD
Concentration	1 mg/ml
Formulation	Liquid in 0.42% Potassium phosphate, 0.87% Sodium chloride, pH 7.3, 30% glycerol, and 0.01% sodium azide.
Storage	Shipped at 4°C. Upon delivery aliquot and store at -20°C for one year. Avoid freeze/thaw cycles.

Application Details

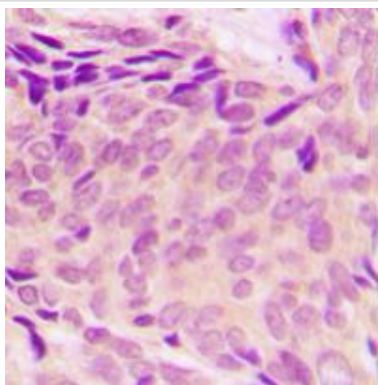
Western blotting:1:500 - 1:1000

Immunohistochemistry:1:50 - 1:100

Images



Western blot analysis of RPL37A expression in HeLa (A), HEK293T (B), Raw264.7 (C), H9C2 (D) whole cell lysates



Immunohistochemical analysis of RPL37A staining in human breast cancer formalin fixed paraffin embedded tissue section. The section was pre-treated using heat mediated antigen retrieval with sodium citrate buffer (pH 6.0). The section was then incubated with the antibody at room temperature and detected using an HRP conjugated compact polymer system. DAB was used as the chromogen. The section was then counterstained with haematoxylin and mounted with DPX.

Note: This product is for in vitro research use only and is not intended for use in humans or animals.