

CD92 Antibody

Catalog No: #47908

Package Size: #47908-1 50ul #47908-2 100ul

Orders: order@signalwayantibody.comSupport: tech@signalwayantibody.com

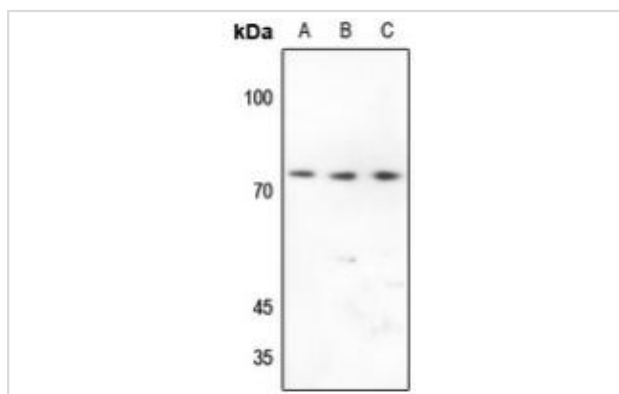
Description

Product Name	CD92 Antibody
Host Species	Rabbit
Clonality	Polyclonal
Purification	The antibody was purified by immunogen affinity chromatography.
Applications	WB
Species Reactivity	Hu,Ms,Rt
Specificity	Recognizes endogenous levels of CD92 protein.
Immunogen Description	KLH-conjugated synthetic peptide encompassing a sequence within the center region of human CD92.
Target Name	SLC44A1
Other Names	CD92; CDW92; CTL1; Choline transporter-like protein 1; CDw92; Solute carrier family 44 member 1; CD92
Accession No.	Swiss-Prot#:Q8WWI5NCBI Gene ID:23446
Calculated MW	73KD
Concentration	1 mg/ml
Formulation	Liquid in 0.42% Potassium phosphate, 0.87% Sodium chloride, pH 7.3, 30% glycerol, and 0.01% sodium azide.
Storage	Shipped at 4°C. Upon delivery aliquot and store at -20°C for one year. Avoid freeze/thaw cycles.

Application Details

Western blotting:1:500 - 1:1000

Images



Western blot analysis of CD92 expression in HEK293T (A), HeLa (B), H446 (C) whole cell lysates.

Note: This product is for in vitro research use only and is not intended for use in humans or animals.