

## SOX6 Antibody

Catalog No: #47910

Package Size: #47910-1 50ul #47910-2 100ul

Orders: [order@signalwayantibody.com](mailto:order@signalwayantibody.com)Support: [tech@signalwayantibody.com](mailto:tech@signalwayantibody.com)

## Description

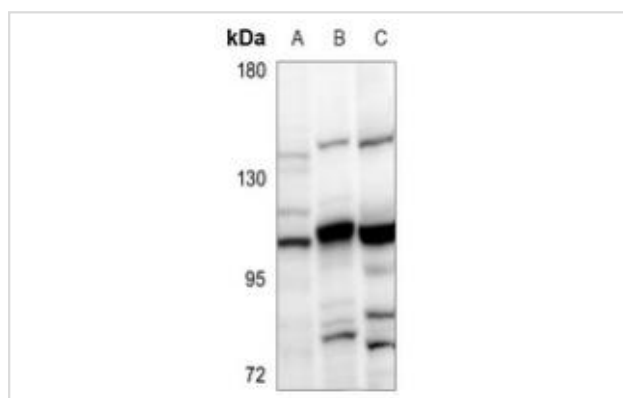
Product Name	SOX6 Antibody
Host Species	Rabbit
Clonality	Polyclonal
Purification	The antibody was purified by immunogen affinity chromatography.
Applications	WB, IHC
Species Reactivity	Hu,Ms,Rt
Specificity	Recognizes endogenous levels of SOX6 protein.
Immunogen Description	KLH-conjugated synthetic peptide encompassing a sequence within the N-term region of human SOX6.
Target Name	SOX6
Other Names	Transcription factor SOX-6
Accession No.	Swiss-Prot#:P35712NCBI Gene ID:55553
Calculated MW	91KD
Concentration	1 mg/ml
Formulation	Liquid in 0.42% Potassium phosphate, 0.87% Sodium chloride, pH 7.3, 30% glycerol, and 0.01% sodium azide.
Storage	Shipped at 4°C. Upon delivery aliquot and store at -20°C for one year. Avoid freeze/thaw cycles.

## Application Details

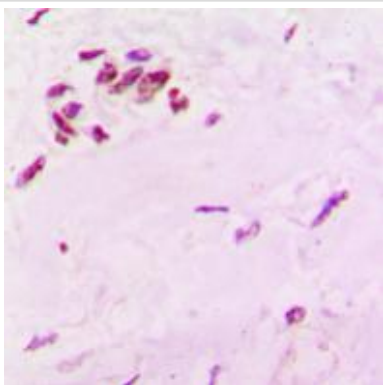
Western blotting:1:500 - 1:1000

Immunohistochemistry:1:50 - 1:100

## Images



Western blot analysis of SOX6 expression in A549 (A), C6 (B), SP20 (C) whole cell lysates



Immunohistochemical analysis of SOX6 staining in human lung cancer formalin fixed paraffin embedded tissue section. The section was pre-treated using heat mediated antigen retrieval with sodium citrate buffer (pH 6.0). The section was then incubated with the antibody at room temperature and detected using an HRP conjugated compact polymer system. DAB was used as the chromogen. The section was then counterstained with haematoxylin and mounted with DPX.

---

Note: This product is for in vitro research use only and is not intended for use in humans or animals.