

Ig lambda C Antibody

Catalog No: #47919



Package Size: #47919-1 50ul #47919-2 100ul

Orders: order@signalwayantibody.comSupport: tech@signalwayantibody.com

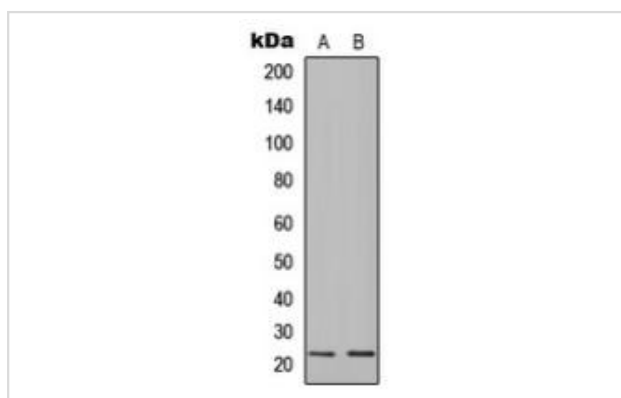
Description

Product Name	Ig lambda C Antibody
Host Species	Rabbit
Clonality	Polyclonal
Purification	The antibody was purified by immunogen affinity chromatography.
Applications	WB
Species Reactivity	Hu
Specificity	Recognizes endogenous levels of Ig lambda C protein.
Immunogen Description	KLH-conjugated synthetic peptide encompassing a sequence within the N-term region of human Ig lambda C.
Target Name	IGLC1; IGLC2; IGLC3; IGLC6; IGLC7
Other Names	IGLL1; IGL1; Immunoglobulin lambda-like polypeptide 1; CD179 antigen-like family member B; Ig lambda-5; Immunoglobulin omega polypeptide; Immunoglobulin-related protein 14.1; CD179b; IGLC1; Ig lambda-1 chain C regions; IGLC2; Ig lambda-2 chain C regions; IGLC3; Ig lambda-3 chain C regions; IGLC6; Ig lambda-6 chain C region; IGLC7; Ig lambda-7 chain C region
Accession No.	Swiss-Prot#:P15814; P0CG04; P0CG05; P0CG06; P0CF74; A0M8Q6NCBI Gene ID:3543
Calculated MW	23KD
Concentration	1 mg/ml
Formulation	Liquid in 0.42% Potassium phosphate, 0.87% Sodium chloride, pH 7.3, 30% glycerol, and 0.01% sodium azide.
Storage	Shipped at 4°C. Upon delivery aliquot and store at -20°C for one year. Avoid freeze/thaw cycles.

Application Details

Western blotting:1:500 - 1:1000

Images



Western blot analysis of Ig lambda C expression in K562 (A), human spleen (B) whole cell lysates.

Note: This product is for in vitro research use only and is not intended for use in humans or animals.