

## MRPL35 Antibody

Catalog No: #47920



Package Size: #47920-1 50ul #47920-2 100ul

Orders: [order@signalwayantibody.com](mailto:order@signalwayantibody.com)Support: [tech@signalwayantibody.com](mailto:tech@signalwayantibody.com)

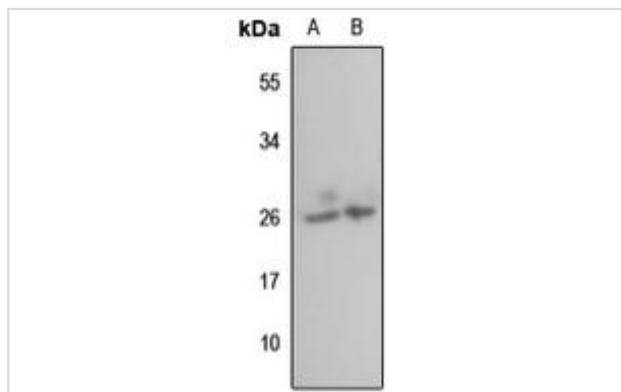
## Description

Product Name	MRPL35 Antibody
Host Species	Rabbit
Clonality	Polyclonal
Purification	The antibody was purified by immunogen affinity chromatography.
Applications	WB, IF/ICC
Species Reactivity	Hu
Specificity	Recognizes endogenous levels of MRPL35 protein.
Immunogen Description	KLH-conjugated synthetic peptide encompassing a sequence within the center region of human MRPL35.
Target Name	MRPL35
Other Names	39S ribosomal protein L35, mitochondrial; L35mt; MRP-L35
Accession No.	Swiss-Prot#:Q9NZE8NCBI Gene ID:51318
Calculated MW	21KD
Concentration	1 mg/ml
Formulation	Liquid in 0.42% Potassium phosphate, 0.87% Sodium chloride, pH 7.3, 30% glycerol, and 0.01% sodium azide.
Storage	Shipped at 4°C. Upon delivery aliquot and store at -20°C for one year. Avoid freeze/thaw cycles.

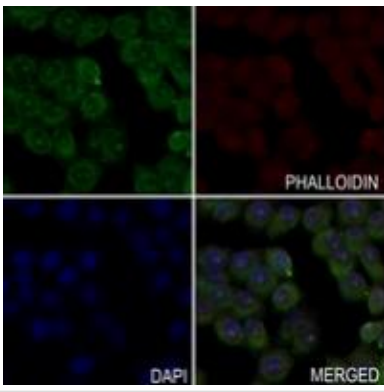
## Application Details

Western blotting:1:500 - 1:1000

## Images



Western blot analysis of MRPL35 expression in HEK293T (A), HeLa (B) whole cell lysates



Immunofluorescent analysis of MRPL35 staining in LO2 cells. Formalin-fixed cells were permeabilized with 0.1% Triton X-100 in TBS for 5-10 minutes and blocked with 3% BSA-PBS for 30 minutes at room temperature. Cells were probed with the primary antibody in 3% BSA-PBS and incubated overnight at 4 °C in a humidified chamber. Cells were washed with PBST and incubated with a AF488-conjugated secondary antibody (green) in PBS at room temperature in the dark. Phalloidin - AF594 was used to stain Actin filaments (red). DAPI was used to stain the cell nuclei (blue).

---

Note: This product is for in vitro research use only and is not intended for use in humans or animals.