

GPRC5A Antibody

Catalog No: #47926

Package Size: #47926-1 50ul #47926-2 100ul

Orders: order@signalwayantibody.comSupport: tech@signalwayantibody.com

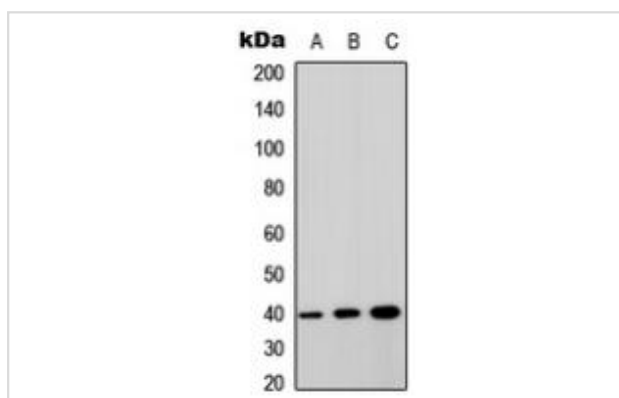
Description

Product Name	GPRC5A Antibody
Host Species	Rabbit
Clonality	Polyclonal
Purification	The antibody was purified by immunogen affinity chromatography.
Applications	WB
Species Reactivity	Hu,Ms
Specificity	Recognizes endogenous levels of GPRC5A protein.
Immunogen Description	KLH-conjugated synthetic peptide encompassing a sequence within the center region of human GPRC5A.
Target Name	GPRC5A
Other Names	GPCR5A; RAI3; RAIG1; Retinoic acid-induced protein 3; G-protein coupled receptor family C group 5 member A; Orphan G-protein-coupling receptor PEIG-1; Retinoic acid-induced gene 1 protein; RAIG-1
Accession No.	Swiss-Prot#:Q8NFJ5NCBI Gene ID:9052
Calculated MW	40KD
Concentration	1 mg/ml
Formulation	Liquid in 0.42% Potassium phosphate, 0.87% Sodium chloride, pH 7.3, 30% glycerol, and 0.01% sodium azide.
Storage	Shipped at 4°C. Upon delivery aliquot and store at -20°C for one year. Avoid freeze/thaw cycles.

Application Details

Western blotting: 1:500 - 1:1000

Images



Western blot analysis of GPRC5A expression in MCF7 (A), HEK293T (B), NIH3T3 (C) whole cell lysates

Note: This product is for in vitro research use only and is not intended for use in humans or animals.