

SNAT2 Antibody

Catalog No: #47931



Package Size: #47931-1 50ul #47931-2 100ul

Orders: order@signalwayantibody.comSupport: tech@signalwayantibody.com

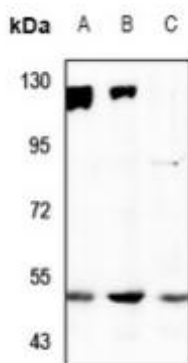
Description

Product Name	SNAT2 Antibody
Host Species	Rabbit
Clonality	Polyclonal
Purification	The antibody was purified by immunogen affinity chromatography.
Applications	WB
Species Reactivity	Hu,Ms
Specificity	Recognizes endogenous levels of SNAT2 protein.
Immunogen Description	KLH-conjugated synthetic peptide encompassing a sequence within the center region of human SNAT2.
Target Name	SLC38A2
Other Names	ATA2; KIAA1382; SAT2; SNAT2; Sodium-coupled neutral amino acid transporter 2; Amino acid transporter A2; Protein 40-9-1; Solute carrier family 38 member 2; System A amino acid transporter 2; System A transporter 1; System N amino acid transporter 2
Accession No.	Swiss-Prot#:Q96QD8NCBI Gene ID:54407
Calculated MW	50KD
Concentration	1 mg/ml
Formulation	Liquid in 0.42% Potassium phosphate, 0.87% Sodium chloride, pH 7.3, 30% glycerol, and 0.01% sodium azide.
Storage	Shipped at 4°C. Upon delivery aliquot and store at -20°C for one year. Avoid freeze/thaw cycles.

Application Details

Western blotting:1:500 - 1:1000

Images



Immunohistochemical analysis of SAP49 staining in human lung formalin fixed paraffin embedded tissue section. The section was pre-treated using heat mediated antigen retrieval with sodium citrate buffer (pH 6.0). The section was then incubated with the antibody at room temperature and detected using an HRP conjugated compact polymer system. DAB was used as the chromogen. The section was then counterstained with haematoxylin and mounted with DPX.

Note: This product is for in vitro research use only and is not intended for use in humans or animals.