

RB3 Antibody

Catalog No: #47932



Package Size: #47932-1 50ul #47932-2 100ul

Orders: order@signalwayantibody.comSupport: tech@signalwayantibody.com

Description

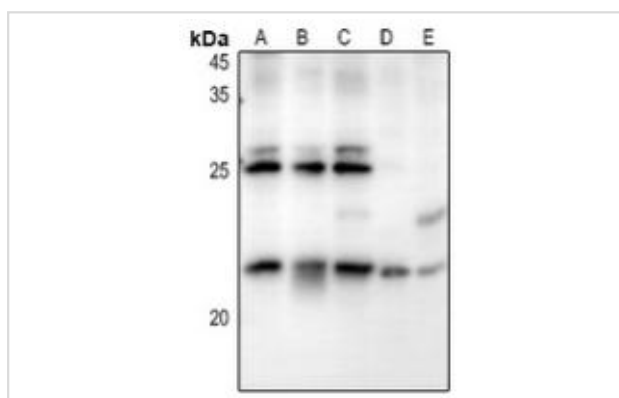
Product Name	RB3 Antibody
Host Species	Rabbit
Clonality	Polyclonal
Purification	The antibody was purified by immunogen affinity chromatography.
Applications	WB, IHC
Species Reactivity	Hu,Ms,Rt
Specificity	Recognizes endogenous levels of RB3 protein.
Immunogen Description	KLH-conjugated synthetic peptide encompassing a sequence within the C-term region of human RB3.
Target Name	STMN4
Other Names	Stathmin-4; Stathmin-like protein B3; RB3
Accession No.	Swiss-Prot#:Q9H169NCBI Gene ID:81551
Calculated MW	22,25KD
Concentration	1 mg/ml
Formulation	Liquid in 0.42% Potassium phosphate, 0.87% Sodium chloride, pH 7.3, 30% glycerol, and 0.01% sodium azide.
Storage	Shipped at 4°C. Upon delivery aliquot and store at -20°C for one year. Avoid freeze/thaw cycles.

Application Details

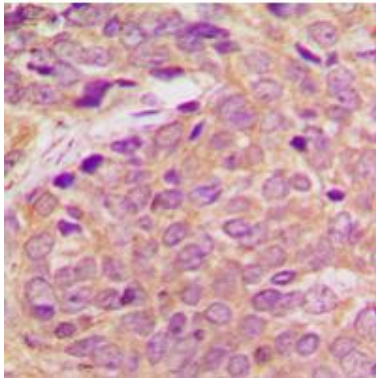
Western blotting:1:500 - 1:1000

Immunohistochemistry:1:50 - 1:100

Images



Western blot analysis of RB3 expression in COS7 (A), MCF7 (B), A549 (C), CT26 (D), PC12 (E) whole cell lysates.



Immunohistochemical analysis of RB3 staining in human breast cancer formalin fixed paraffin embedded tissue section. The section was pre-treated using heat mediated antigen retrieval with sodium citrate buffer (pH 6.0). The section was then incubated with the antibody at room temperature and detected using an HRP conjugated compact polymer system. DAB was used as the chromogen. The section was then counterstained with haematoxylin and mounted with DPX.

Note: This product is for in vitro research use only and is not intended for use in humans or animals.