

## ATP1A2 Antibody

Catalog No: #47937



Package Size: #47937-1 50ul #47937-2 100ul

Orders: [order@signalwayantibody.com](mailto:order@signalwayantibody.com)Support: [tech@signalwayantibody.com](mailto:tech@signalwayantibody.com)

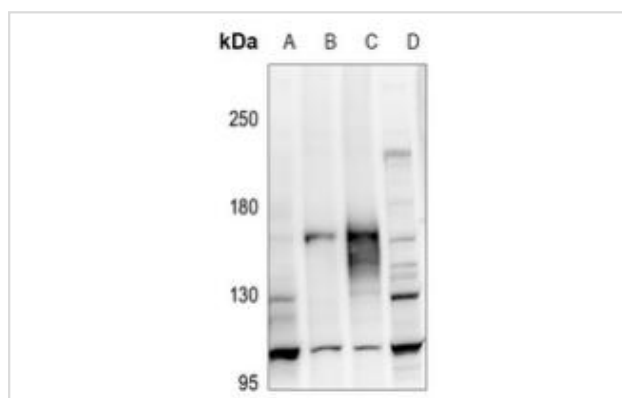
## Description

Product Name	ATP1A2 Antibody
Host Species	Rabbit
Clonality	Polyclonal
Purification	The antibody was purified by immunogen affinity chromatography.
Applications	WB
Species Reactivity	Hu,Ms,Rt
Specificity	Recognizes endogenous levels of ATP1A2 protein.
Immunogen Description	KLH-conjugated synthetic peptide encompassing a sequence within the C-term region of human ATP1A2.
Target Name	ATP1A2
Other Names	KIAA0778; Sodium/potassium-transporting ATPase subunit alpha-2; Na(+)/K(+) ATPase alpha-2 subunit; Sodium pump subunit alpha-2
Accession No.	Swiss-Prot#:P50993NCBI Gene ID:477
Calculated MW	112KD
Concentration	1 mg/ml
Formulation	Liquid in 0.42% Potassium phosphate, 0.87% Sodium chloride, pH 7.3, 30% glycerol, and 0.01% sodium azide.
Storage	Shipped at 4°C. Upon delivery aliquot and store at -20°C for one year. Avoid freeze/thaw cycles.

## Application Details

Western blotting:1:500 - 1:1000

## Images



Western blot analysis of ATP1A2 expression in Hela (A), H1792 (B), Panc1 (C), AML12 (D) whole cell lysates.

Note: This product is for in vitro research use only and is not intended for use in humans or animals.