

PB Cadherin Antibody

Catalog No: #47938



Package Size: #47938-1 50ul #47938-2 100ul

Orders: order@signalwayantibody.comSupport: tech@signalwayantibody.com

Description

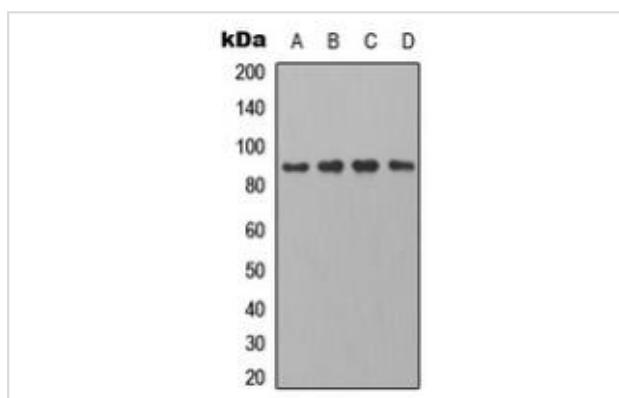
| | |
|-----------------------|---|
| Product Name | PB Cadherin Antibody |
| Host Species | Rabbit |
| Clonality | Polyclonal |
| Purification | The antibody was purified by immunogen affinity chromatography. |
| Applications | WB, IHC, IF/ICC |
| Species Reactivity | Hu,Ms,Rt |
| Specificity | Recognizes endogenous levels of PB Cadherin protein. |
| Immunogen Description | KLH-conjugated synthetic peptide encompassing a sequence within the center region of human PB Cadherin. |
| Target Name | CDH22 |
| Other Names | C20orf25; Cadherin-22; Pituitary and brain cadherin; PB-cadherin |
| Accession No. | Swiss-Prot#:Q9UJ99NCBI Gene ID:64405 |
| Calculated MW | 89KD |
| Concentration | 1 mg/ml |
| Formulation | Liquid in 0.42% Potassium phosphate, 0.87% Sodium chloride, pH 7.3, 30% glycerol, and 0.01% sodium azide. |
| Storage | Shipped at 4°C. Upon delivery aliquot and store at -20°C for one year. Avoid freeze/thaw cycles. |

Application Details

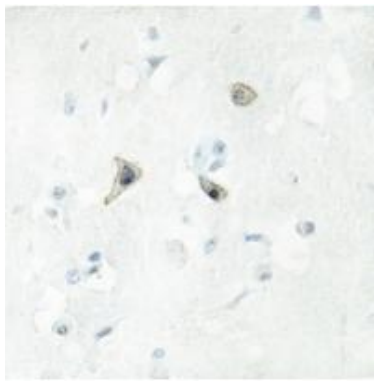
Western blotting:1:500 - 1:1000

Immunofluorescence:1:100 - 1:300

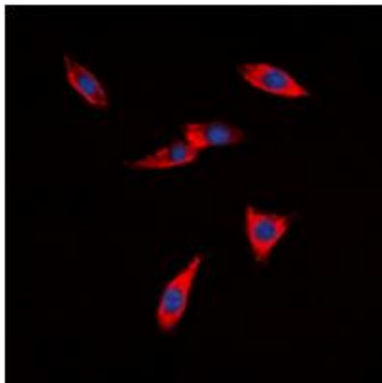
Images



Western blot analysis of PB Cadherin expression in HeLa (A), 3T3 (B), mouse heart (C), rat brain (D) whole cell lysates.



Immunohistochemical analysis of PB Cadherin staining in human brain formalin fixed paraffin embedded tissue section. The section was pre-treated using heat mediated antigen retrieval with sodium citrate buffer (pH 6.0). The section was then incubated with the antibody at room temperature and detected using an HRP conjugated compact polymer system. DAB was used as the chromogen. The section was then counterstained with haematoxylin and mounted with DPX.



Immunofluorescent analysis of PB Cadherin staining in HeLa cells. Formalin-fixed cells were permeabilized with 0.1% Triton X-100 in TBS for 5-10 minutes and blocked with 3% BSA-PBS for 30 minutes at room temperature. Cells were probed with the primary antibody in 3% BSA-PBS and incubated overnight at 4 °C in a humidified chamber. Cells were washed with PBST and incubated with a DyLight 594-conjugated secondary antibody (red) in PBS at room temperature in the dark. DAPI was used to stain the cell nuclei (blue).

Note: This product is for in vitro research use only and is not intended for use in humans or animals.