

## Cadherin 20 Antibody

Catalog No: #47951



Package Size: #47951-1 50ul #47951-2 100ul

Orders: [order@signalwayantibody.com](mailto:order@signalwayantibody.com)Support: [tech@signalwayantibody.com](mailto:tech@signalwayantibody.com)

## Description

Product Name	Cadherin 20 Antibody
Host Species	Rabbit
Clonality	Polyclonal
Purification	The antibody was purified by immunogen affinity chromatography.
Applications	WB, IHC, IF/ICC
Species Reactivity	Hu,Ms,Rt
Specificity	Recognizes endogenous levels of Cadherin 20 protein.
Immunogen Description	KLH-conjugated synthetic peptide encompassing a sequence within the center region of human Cadherin 20.
Target Name	CDH20
Other Names	CDH7L3; Cadherin-20
Accession No.	Swiss-Prot#:Q9HBT6NCBI Gene ID:28316
Calculated MW	89KD
Concentration	1 mg/ml
Formulation	Liquid in 0.42% Potassium phosphate, 0.87% Sodium chloride, pH 7.3, 30% glycerol, and 0.01% sodium azide.
Storage	Shipped at 4°C. Upon delivery aliquot and store at -20°C for one year. Avoid freeze/thaw cycles.

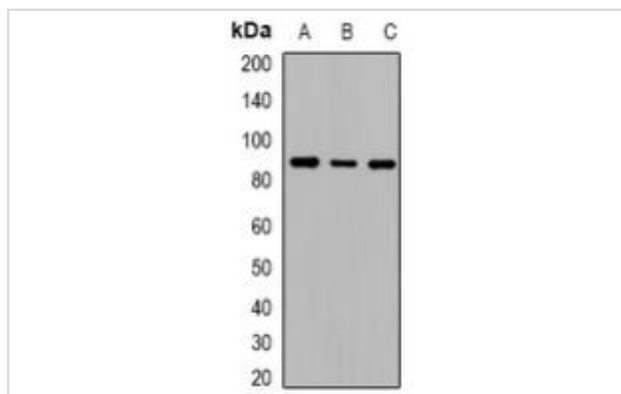
## Application Details

Western blotting:1:500 - 1:1000

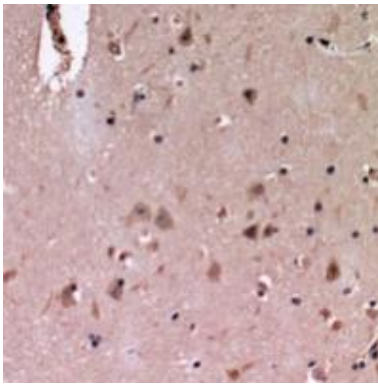
Immunohistochemistry:1:50 - 1:100

Immunofluorescence:1:100 - 1:300

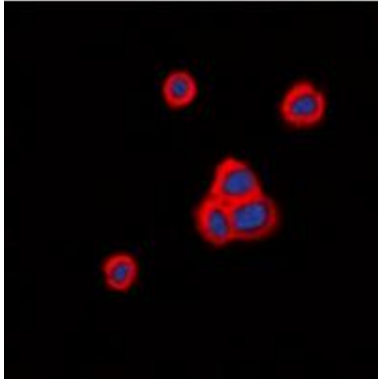
## Images



Western blot analysis of Cadherin 20 expression in HeLa (A), mouse liver (B), rat liver (C) whole cell lysates.



Immunohistochemical analysis of Cadherin 20 staining in human brain formalin fixed paraffin embedded tissue section. The section was pre-treated using heat mediated antigen retrieval with sodium citrate buffer (pH 6.0). The section was then incubated with the antibody at room temperature and detected using an HRP conjugated compact polymer system. DAB was used as the chromogen. The section was then counterstained with haematoxylin and mounted with DPX.



Immunofluorescent analysis of Cadherin 20 staining in HeLa cells. Formalin-fixed cells were permeabilized with 0.1% Triton X-100 in TBS for 5-10 minutes and blocked with 3% BSA-PBS for 30 minutes at room temperature. Cells were probed with the primary antibody in 3% BSA-PBS and incubated overnight at 4 °C in a humidified chamber. Cells were washed with PBST and incubated with a DyLight 594-conjugated secondary antibody (red) in PBS at room temperature in the dark. DAPI was used to stain the cell nuclei (blue).

---

Note: This product is for in vitro research use only and is not intended for use in humans or animals.