

FUK Antibody

Catalog No: #47958

Package Size: #47958-1 50ul #47958-2 100ul

Orders: order@signalwayantibody.comSupport: tech@signalwayantibody.com

Description

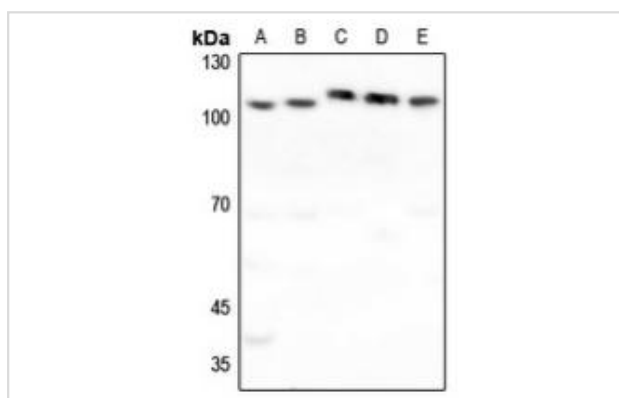
Product Name	FUK Antibody
Host Species	Rabbit
Clonality	Polyclonal
Purification	The antibody was purified by immunogen affinity chromatography.
Applications	WB, IHC, IF/ICC
Species Reactivity	Hu,Ms,Rt
Specificity	Recognizes endogenous levels of FUK protein.
Immunogen Description	KLH-conjugated synthetic peptide encompassing a sequence within the N-term region of human FUK.
Target Name	FUK
Other Names	L-fucose kinase; Fucokinase
Accession No.	Swiss-Prot#:Q8N0W3NCBI Gene ID:197258
Calculated MW	118KD
Concentration	1 mg/ml
Formulation	Liquid in 0.42% Potassium phosphate, 0.87% Sodium chloride, pH 7.3, 30% glycerol, and 0.01% sodium azide.
Storage	Shipped at 4°C. Upon delivery aliquot and store at -20°C for one year. Avoid freeze/thaw cycles.

Application Details

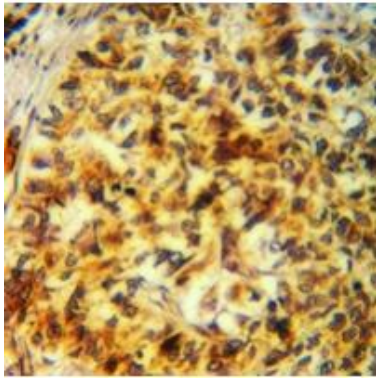
Western blotting:1:500 - 1:1000

Immunofluorescence:1:100 - 1:300

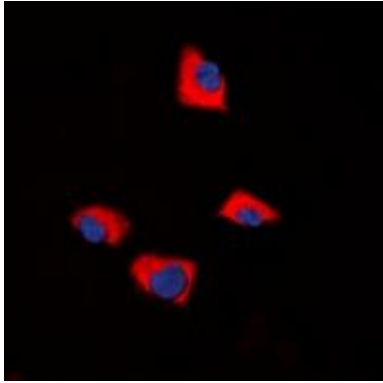
Images



Western blot analysis of FUK expression in Hela (A), A549 (B), mouse lung (C), mouse kidney (D), rat lung (E) whole cell lysates.



Immunohistochemical analysis of FUK staining in human stomach cancer formalin fixed paraffin embedded tissue section. The section was pre-treated using heat mediated antigen retrieval with sodium citrate buffer (pH 6.0). The section was then incubated with the antibody at room temperature and detected using an HRP conjugated compact polymer system. DAB was used as the chromogen. The section was then counterstained with haematoxylin and mounted with DPX.



Immunofluorescent analysis of FUK staining in NIH3T3 cells. Formalin-fixed cells were permeabilized with 0.1% Triton X-100 in TBS for 5-10 minutes and blocked with 3% BSA-PBS for 30 minutes at room temperature. Cells were probed with the primary antibody in 3% BSA-PBS and incubated overnight at 4 °C in a humidified chamber. Cells were washed with PBST and incubated with a DyLight 594-conjugated secondary antibody (red) in PBS at room temperature in the dark. DAPI was used to stain the cell nuclei (blue)

Note: This product is for in vitro research use only and is not intended for use in humans or animals.