

# IDH3 alpha Antibody

Catalog No: #47962

Package Size: #47962-1 50ul #47962-2 100ul

Orders: [order@signalwayantibody.com](mailto:order@signalwayantibody.com)Support: [tech@signalwayantibody.com](mailto:tech@signalwayantibody.com)

## Description

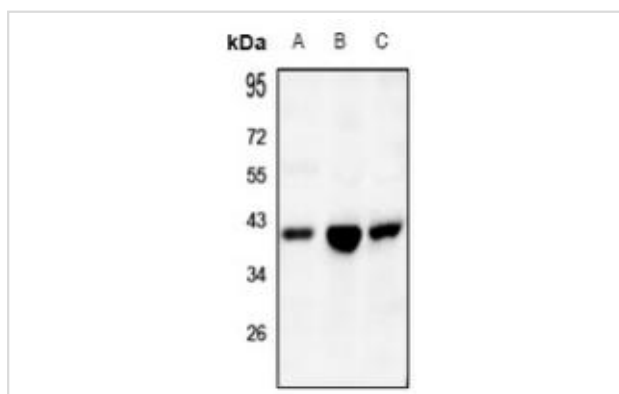
Product Name	IDH3 alpha Antibody
Host Species	Rabbit
Clonality	Polyclonal
Purification	The antibody was purified by immunogen affinity chromatography.
Applications	WB, IHC
Species Reactivity	Hu,Ms,Rt
Specificity	Recognizes endogenous levels of IDH3 alpha protein.
Immunogen Description	KLH-conjugated synthetic peptide encompassing a sequence within the center region of human IDH3 alpha.
Target Name	IDH3A
Other Names	Isocitrate dehydrogenase [NAD] subunit alpha, mitochondrial; Isocitric dehydrogenase subunit alpha; NAD(+)-specific ICDH subunit alpha
Accession No.	Swiss-Prot#:P50213NCBI Gene ID:3419
Calculated MW	40KD
Concentration	1 mg/ml
Formulation	Liquid in 0.42% Potassium phosphate, 0.87% Sodium chloride, pH 7.3, 30% glycerol, and 0.01% sodium azide.
Storage	Shipped at 4°C. Upon delivery aliquot and store at -20°C for one year. Avoid freeze/thaw cycles.

## Application Details

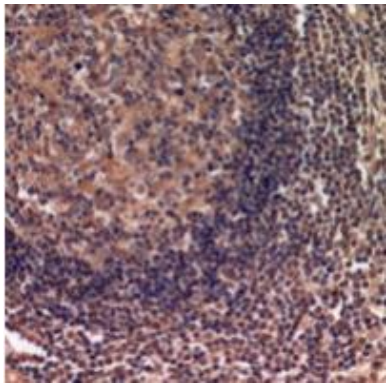
Western blotting:1:500 - 1:1000

Immunohistochemistry:1:50 - 1:100

## Images



Western blot analysis of IDH3 alpha expression in SGC7901 (A), PC12 (B), CT26 (C) whole cell lysates.



Immunohistochemical analysis of IDH3 alpha staining in human lymph gland formalin fixed paraffin embedded tissue section. The section was pre-treated using heat mediated antigen retrieval with sodium citrate buffer (pH 6.0). The section was then incubated with the antibody at room temperature and detected using an HRP conjugated compact polymer system. DAB was used as the chromogen. The section was then counterstained with haematoxylin and mounted with DPX.

---

Note: This product is for in vitro research use only and is not intended for use in humans or animals.