

GPRC5D Antibody

Catalog No: #47966

Package Size: #47966-1 50ul #47966-2 100ul

Orders: order@signalwayantibody.comSupport: tech@signalwayantibody.com

Description

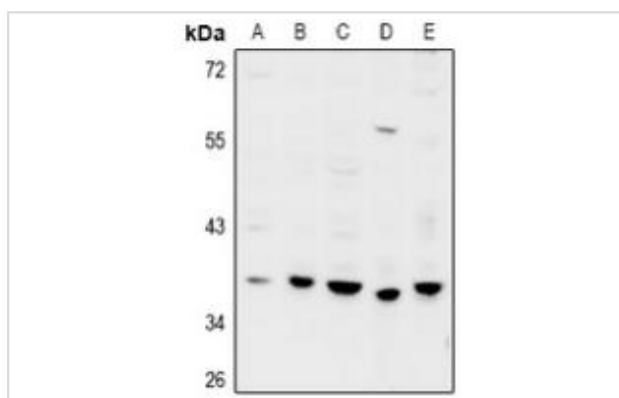
Product Name	GPRC5D Antibody
Host Species	Rabbit
Clonality	Polyclonal
Purification	The antibody was purified by immunogen affinity chromatography.
Applications	WB, IF/ICC
Species Reactivity	Hu,Ms,Rt
Specificity	Recognizes endogenous levels of GPRC5D protein.
Immunogen Description	KLH-conjugated synthetic peptide encompassing a sequence within the C-term region of human GPRC5D.
Target Name	GPRC5D
Other Names	G-protein coupled receptor family C group 5 member D
Accession No.	Swiss-Prot#:Q9NZD1NCBI Gene ID:55507
Calculated MW	39KD
Concentration	1 mg/ml
Formulation	Liquid in 0.42% Potassium phosphate, 0.87% Sodium chloride, pH 7.3, 30% glycerol, and 0.01% sodium azide.
Storage	Shipped at 4°C. Upon delivery aliquot and store at -20°C for one year. Avoid freeze/thaw cycles.

Application Details

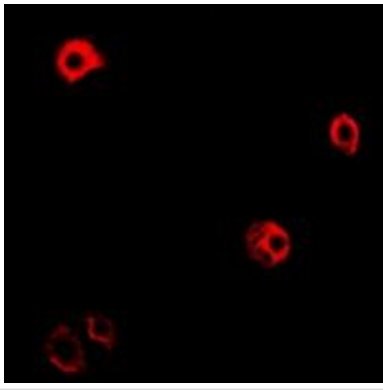
Western blotting:1:500 - 1:1000

Immunofluorescence:1:100 - 1:300

Images



Western blot analysis of GPRC5D expression in MCF7 (A), SGC7901 (B), Panc1 (C), CT26 (D), PC12 (E) whole cell lysates.



Immunofluorescent analysis of GPRC5D staining in MCF7 cells. Formalin-fixed cells were permeabilized with 0.1% Triton X-100 in TBS for 5-10 minutes and blocked with 3% BSA-PBS for 30 minutes at room temperature. Cells were probed with the primary antibody in 3% BSA-PBS and incubated overnight at 4 °C in a humidified chamber. Cells were washed with PBST and incubated with Alexa Fluor 647-conjugated secondary antibody (red) in PBS at room temperature in the dark.

Note: This product is for in vitro research use only and is not intended for use in humans or animals.