

RAP2B Antibody

Catalog No: #47970

Package Size: #47970-1 50ul #47970-2 100ul

Orders: order@signalwayantibody.comSupport: tech@signalwayantibody.com

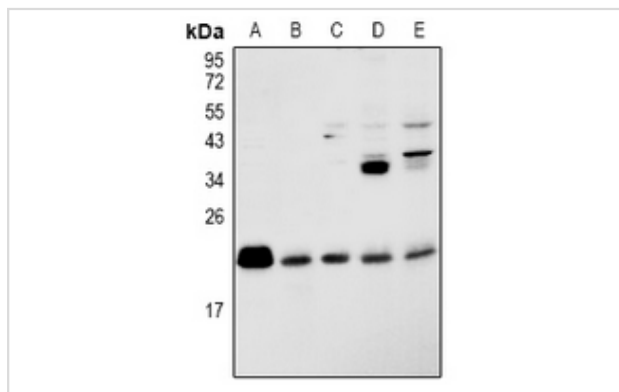
Description

Product Name	RAP2B Antibody
Host Species	Rabbit
Clonality	Polyclonal
Purification	The antibody was purified by immunogen affinity chromatography.
Applications	WB
Species Reactivity	Hu,Ms,Rt
Specificity	Recognizes endogenous levels of RAP2B protein.
Immunogen Description	KLH-conjugated synthetic peptide encompassing a sequence within the center region of human RAP2B.
Target Name	RAP2B
Other Names	Ras-related protein Rap-2b
Accession No.	Swiss-Prot#:P61225NCBI Gene ID:5912
Calculated MW	21KD
Concentration	1 mg/ml
Formulation	Liquid in 0.42% Potassium phosphate, 0.87% Sodium chloride, pH 7.3, 30% glycerol, and 0.01% sodium azide.
Storage	Shipped at 4°C. Upon delivery aliquot and store at -20°C for one year. Avoid freeze/thaw cycles.

Application Details

Western blotting:1:500 - 1:1000

Images



Western blot analysis of RAP2B expression in K562 (A), Jurkat (B), THP1 (C), BV2 (D), PMVEC (E) whole cell lysates.

Note: This product is for in vitro research use only and is not intended for use in humans or animals.